

AN CUONG HIGH-TECH BUILDING MATERIALS

A KM #47, Highway 5, Viet Hoa Ward, Hai Duong City, Hai Duong Province, Vietnam
P (+84) 963 017 57 | **E** info@ancuongflooring.com

AN CUONG HIGH-TECH BUILDING MATERIALS., JSC PRODUCT CATALOG

www.ancuongflooring.com





TABLE OF CONTENT

AN CUONGBUILDING MATERIALS., JSC

4-5

About Us
Overview

AN PHAT HOLDINGS

4-5

Introduction
Business Systems

PRODUCTS

4-5

Interior Product
Exterior Product



AN CUONG BUILDING MATERIALS

ABOUT US

An Cuong High-tech Building Materials.,JSC is a subsidiary of An Phat Holdings - A leading enterprise in Southeast Asia that produces high-tech and eco-friendly plastics. We supply interior and exterior finishing products that adhere to various health and quality standards for global markets.



OVERVIEW



Exporting Market

The United States, Europe, Australia, New Zealand, Asia



Location

KM #47, Highway 5, Viet Hoa Ward, Hai Duong City,
Hai Duong Province, Vietnam

Certificates



AN PHAT HOLDINGS

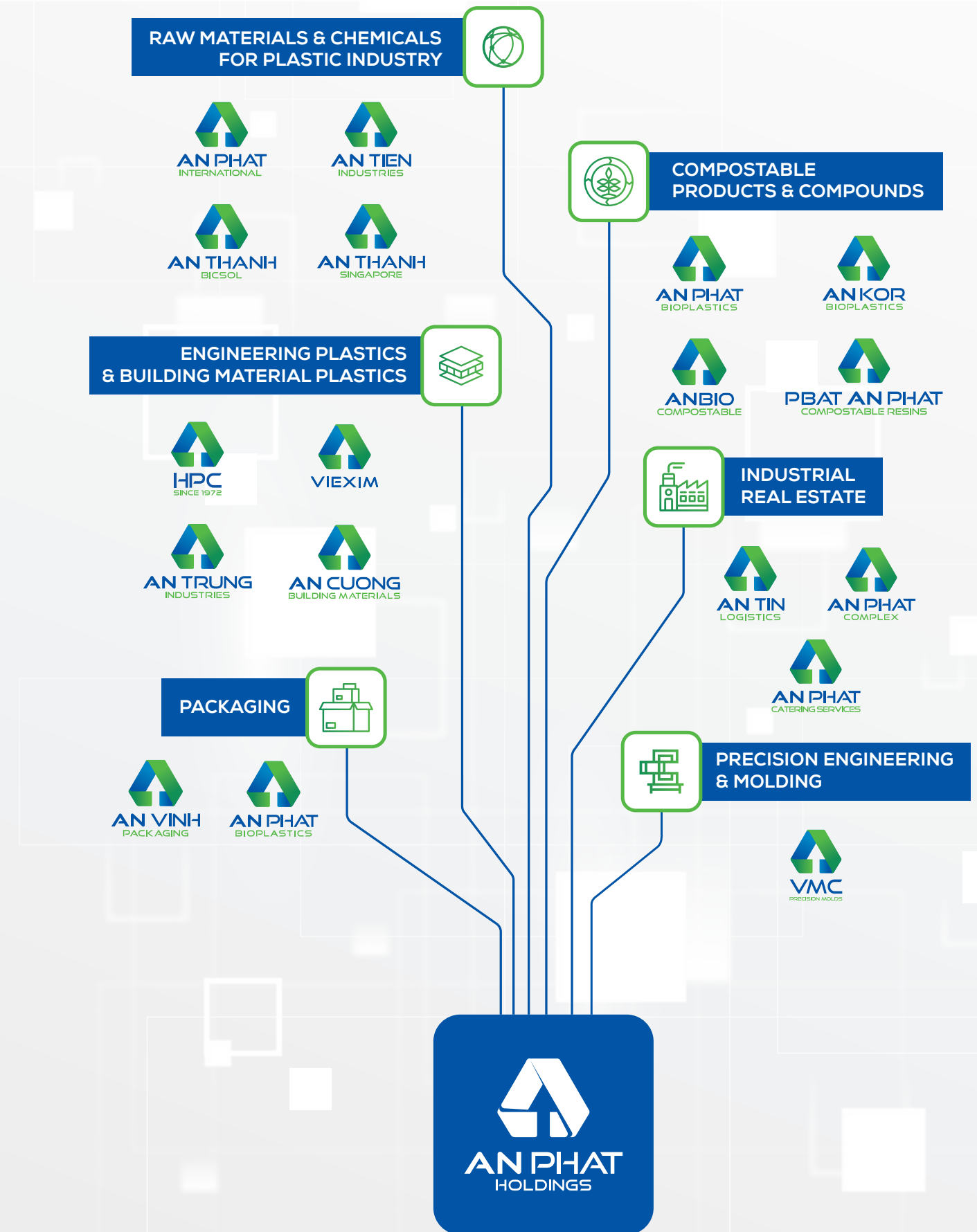
GENERAL INTRODUCTION

An Phat Holdings is the leading high-tech and environmentally friendly plastic corporation in Southeast Asia. With many company members in the plastic ecosystem, we have affirmed the brand name, prestige and position to bring our products to overseas markets such as The United States, Europe, United Arab Emirates, Japan, Korea, Singapore, Taiwan, Philippines, etc.



An Cuong Building Materials

BUSINESS ECOSYSTEM



An Cuong Building Materials

BUILDING MATERIALS PRODUCT

We supply interior and exterior finishing products that adhere to various health and quality standards to worldwide markets.

INTERIOR PRODUCTS

SPC FLOORING

With the latest technology in floor covering, SPC Flooring offers you many benefits: It is stable, durable, 100% waterproof, and scratch-resistant. SPC can be easily installed on a variety of subfloors including concrete or existing vinyl flooring. SPC flooring is completely formaldehyde-free and uses components that are safe for residential and commercial installations.

	mm	inch
Dimension (Customized)	1220x183	48"x7"
	1220x228	48"x9"
	1524x228	60"x9"
	650x228	25.6"x9"
	650x150 (Herringbone)	25.6"x5.9"
Thickness	3.5 – 6.5mm	
Wearlayer	0.2 – 0.7mm	
Surface	UV coating	
Surface Texture	Regular embossed	
Underlayment	IXPE 1.0mm, 1.5mm	
Locking System	UNICLIC	



FEATURES

-  WATERPROOF AND DAMP-PROOF
-  FIRE RETARDANT
-  SCRATCH RESISTANT
-  SLIP RESISTANCE
-  BEAUTIFUL APPEARANCE
-  SOUND ABSORBANCE
-  UV PROTECTION
-  NO FORMALDEHYDE

You can install it quickly and easily on any surface. It is versatile and suitable for various types of projects.

CONCRETE SUBFLOOR



TILE SUBFLOOR



LVT FLOORING

LVT (Luxury Vinyl Tile) flooring is a modern adhesive floor covering. With its realistic simulation of materials like wood, stone, and tile, LVT flooring brings luxury and diversity to any interior space.

Dimension (Customized)	914x152 mm
	1220x178 mm
	610x305 mm
Thickness	1-5 mm
Wear layer	0.2 mm
	0.3 mm
	0.5 mm
Surface	PU coating

WEAR LAYER

PU overlay to ensure long-term durability and wear resistance

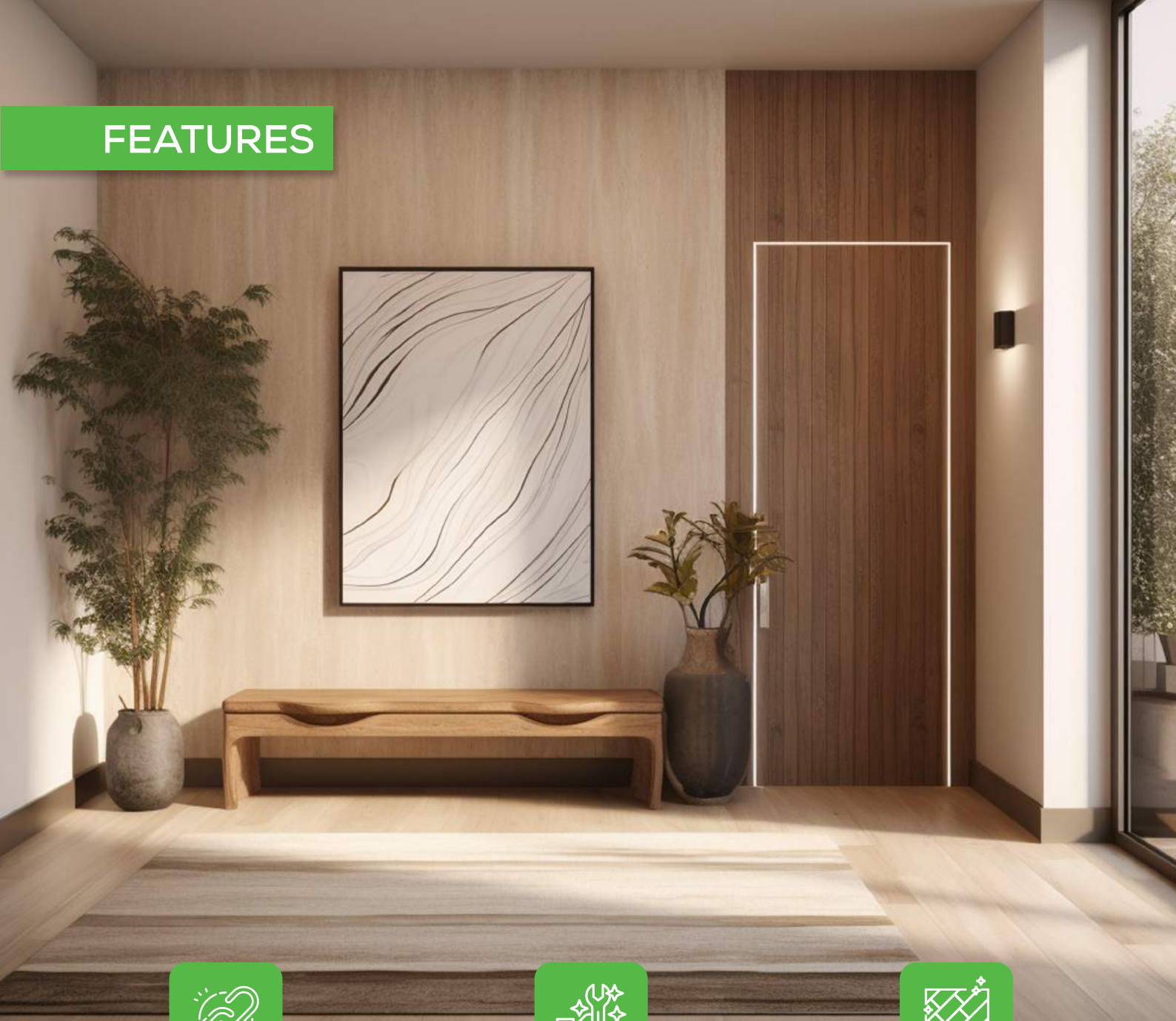
DECORATIVE LAYER

Comes in the widest range of design patterns available

BACKING LAYER



FEATURES



DURABLE



EASY TO MAINTAIN



BEAUTIFUL APPEARANCE

INSTALLATION GUIDE

Adhesive	Temperature	Subfloor
Parterre Universal Adhesive Recommended. Guaranteeing up to 99% RH when used in new construction and up to 95% RH for use in pre-existing buildings.	Install between 65 - 80°F (+/- 5°) and under 80% R.H. (Relative Humidity) (+/-5%).	Concrete, APA-approved plywood, radiant heat subfloors, VCT, Gypsum, Terrazzo.



COLORS

Whether you prefer the warmth of wood or the elegance of stone, we offer a variety of options to suit your aesthetic preferences.

100⁺⁺

DRIVING COLORS



OAK SA18



SPC/LVT FLOORING COLORS



OAK SA11



WALNUT SA15



SPC/LVT FLOORING COLORS



OAK SA46



OAK SA61



SPC/LVT FLOORING COLORS



OAK SA88



STONE SA102



SPC/LVT FLOORING COLORS



OAK SA141



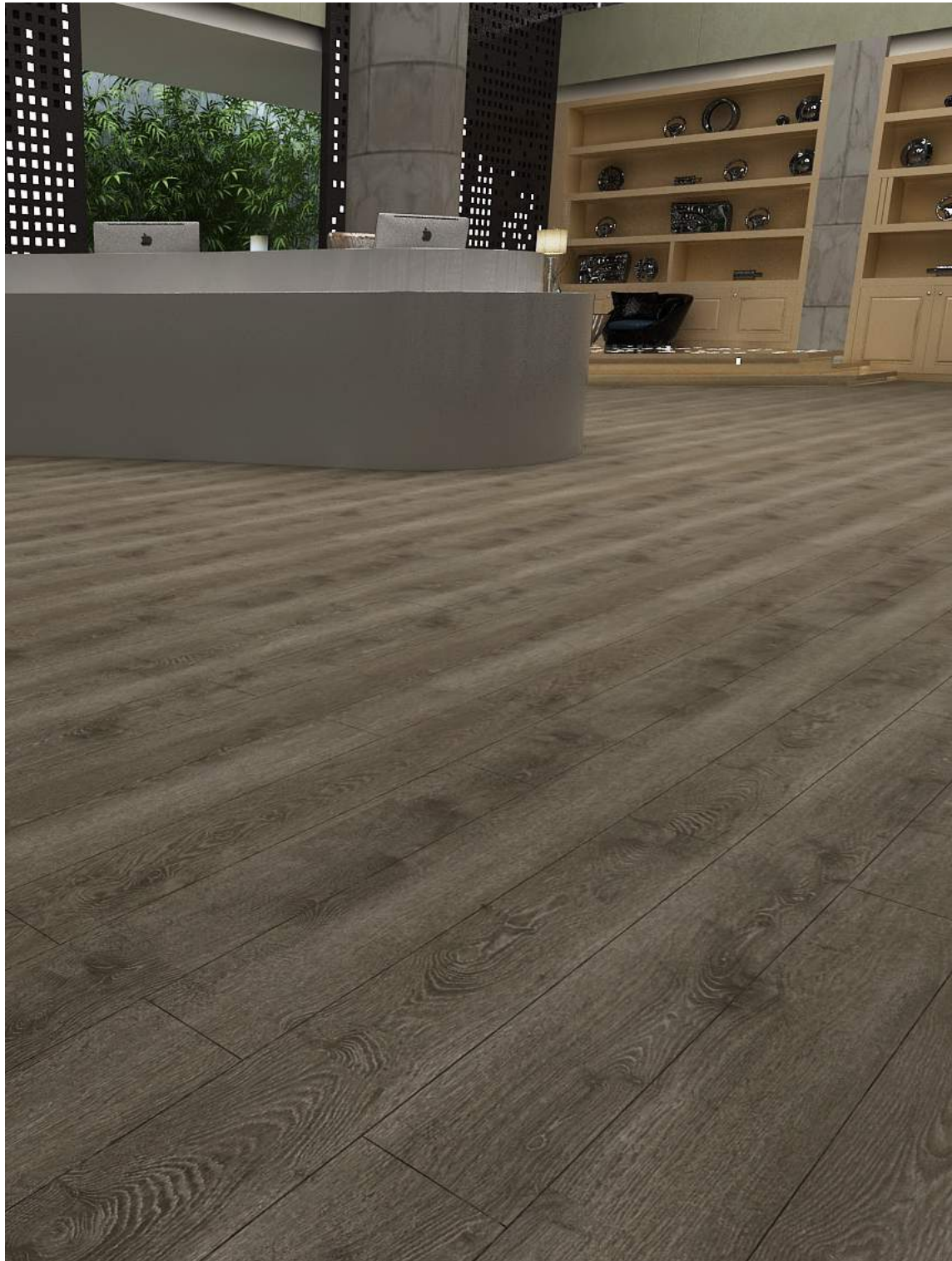
OAK SA142



SPC/LVT FLOORING COLORS



OAK SA143



OAK SA144



SPC/LVT FLOORING COLORS

OAK SA151



WALNUT SA152



SPC/LVT FLOORING COLORS



OAK SA155



OAK SA156



SPC/LVT FLOORING COLORS



OAK SA157



OAK SA158



SPC/LVT FLOORING COLORS



OAK SA166



OAK SA169



SPC/LVT FLOORING COLORS

MAPLE SA188



OAK SA217

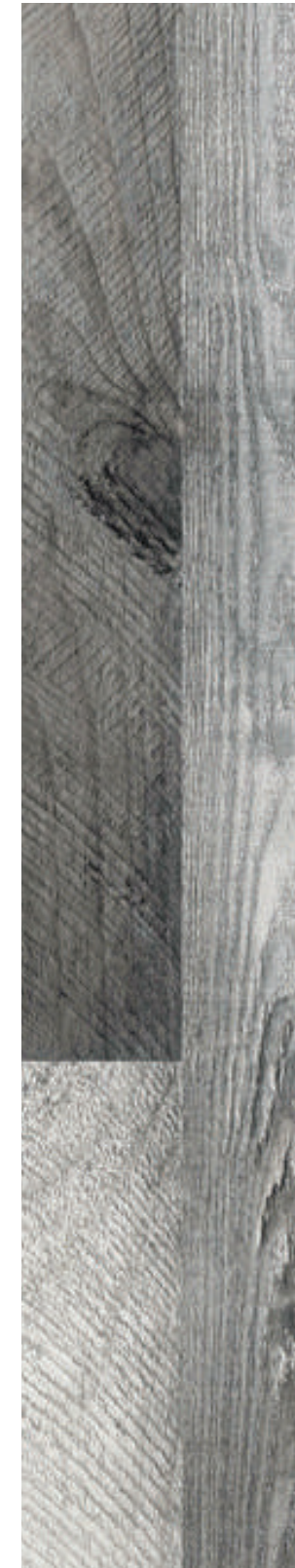


SPC/LVT FLOORING COLORS

FIR WOOD SA237



ANCIENT PINE SA241



SPC/LVT FLOORING COLORS



OAK SA257



OAK SA263



SPC/LVT FLOORING COLORS



OAK SA281



MAPLE SA308



SPC/LVT FLOORING COLORS



OAK SA318



OAK SA343



SPC/LVT FLOORING COLORS



MAPLE SA345



OAK SA352



SPC/LVT FLOORING COLORS



MAPLE SA354



OAK SA365



SPC/LVT FLOORING COLORS



OAK SA368



ELM WOOD SA371



SPC/LVT FLOORING COLORS



OAK SA374



OAK SA377



SPC/LVT FLOORING COLORS



WALNUT SA379



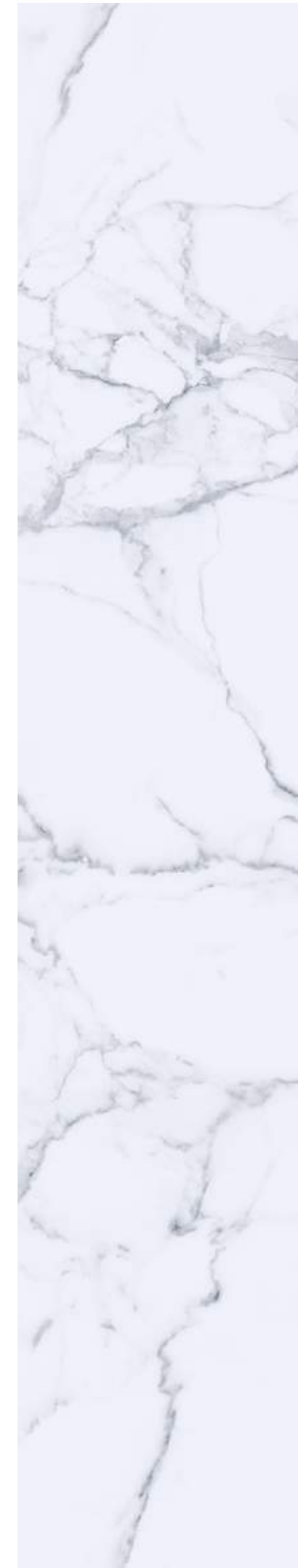
WALNUT SA515



SPC/LVT FLOORING COLORS



OAK SA88



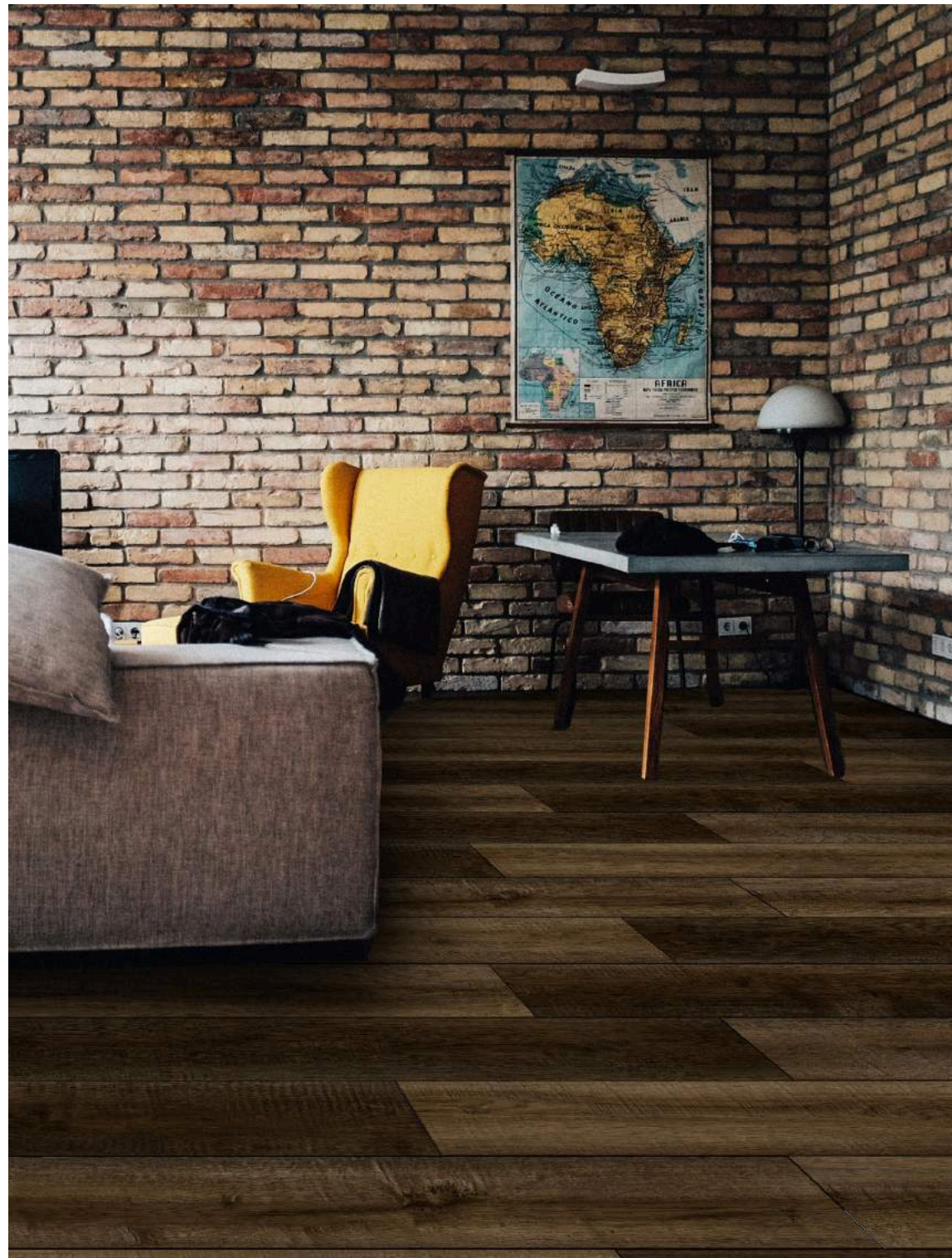
STONE SA102



SPC/LVT FLOORING COLORS



OAK SA144



OAK SA257



SPC/LVT FLOORING COLORS



OAK SA318



OAK SA352



SPC/LVT FLOORING COLORS



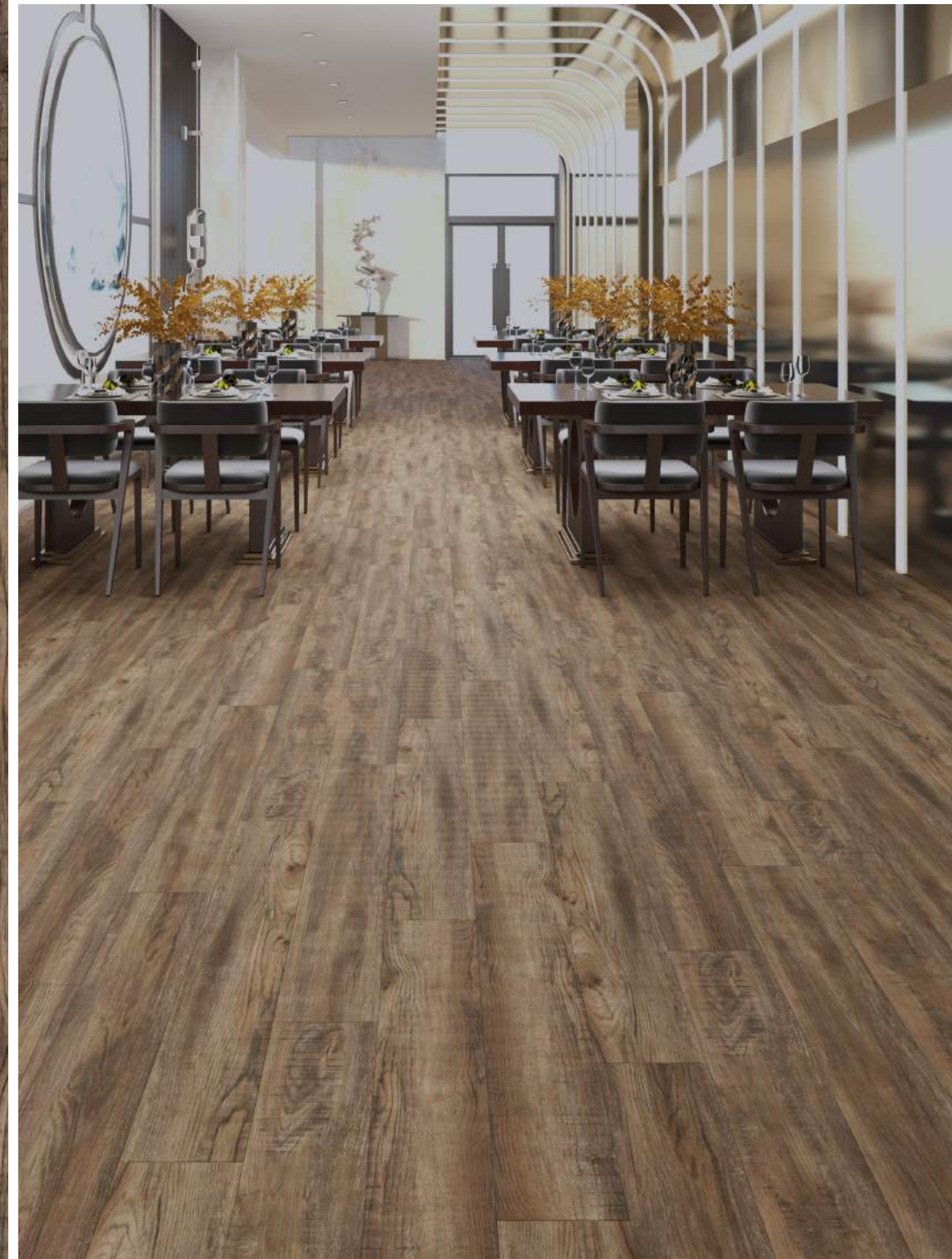
SPC/LVT FLOORING COLORS



OAK SA368



OAK SA377



SPC/LVT FLOORING COLORS

OAK SA379



QUALITY CONTROL EQUIPMENT



Taber Abrasion Tester



Profile Projector



Peel Adhesion Testers



Digital Lab Weighing Scale



Digital Caliper 0-2000mm



Castor Chair Test Apparatus



Feeler (Thickness) Gauges



Digital Caliper 0-300mm



Gloss meter



Digital Portable Thickness Gage



Programmable Temperature Humidity Test Chamber



Automatic Residual Depression Testing Machine



TECHNICAL DATA SHEET

Testing items	Standard	Requirements	Results
Thickness, product without underlayment	ISO 24337	± 0.13mm	Pass
Size, tolerance		Length: ± 1mm Width: ± 0.15mm	Pass
Dimensional stability (6h, 80°C)	ISO 23999	≤ 0.2% (305mm)	Pass
Curl (6h, 80°C)	ISO 23999	≤ 2mm	Pass
Peel strength	EN431	≥20N (25mm, Wealayer 0.3mm) ≥30N (25mm, Wealayer 0.5mm)	Pass
Color fastness	ASTM F1515	ΔE ≤ 8	Pass
Abrasion resistance	ASTM D6040	≥ 4500 cycles (Wearlayer 0.3mm) ≥ 6000 cycles (Wearlayer 0.5mm)	Pass
Opening between elements	ISO 24337	Average ≤ 0.1mm Individual value ≤ 0.2mm	Pass
Height difference		Average ≤ 0.1mm Individual value ≤ 0.15mm	Pass
Gloss	ISO 2813	4-8 Gu	Pass
Scratch resistance	ISO 1518	≥ 2000 grams	Pass
Residual indentation	ASTM F1914	≤ 3%	Pass
Static load	ASTM F970-17	Pass 720 psi at 0.007"	
Impact resistance	ASTM F1265-03a	No break or crack	Pass
Resistance to chemical	ASTM F925-13	No more than a slight change in the surface dulling, surface attack or staining	Pass
Impact insulation class (IIC)	ASTM E 492-09 ASTM E 989-18	N/a	69 db
Sound transmission class (STC)	ASTM E 90-09 ASTM E 413-16	N/a	68 db
Burning behaviour	EN 13501	BSf-1	
Slip resistance	EN 13893	Class DS	
Static Coefficient of friction	ASTM D2047-17	Dry: 0.42/ Wet: 0.61	
Thermal resistance	EN 12667	0.028 – 0.053 /Wm^2 K	
Formaldehyde emission	EN 717	Class E1	
Locking system		Uniclic	

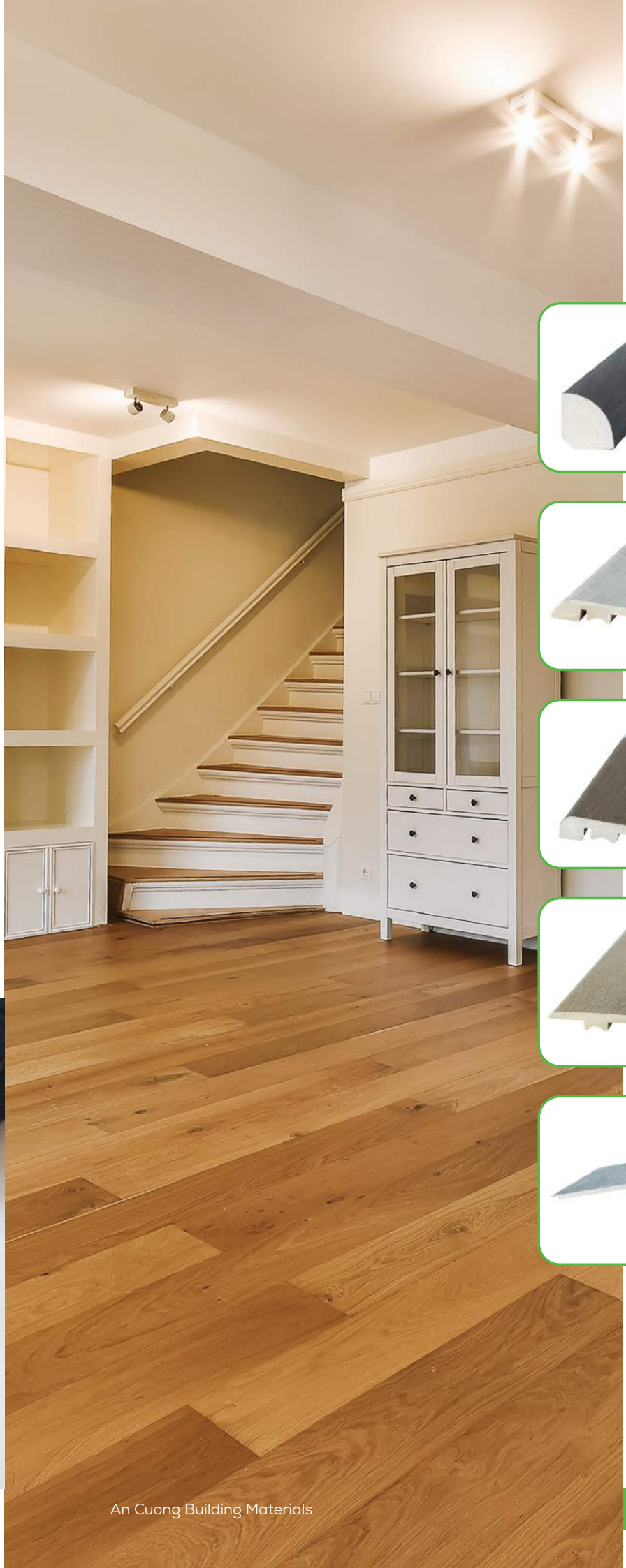
CERTIFICATE



- Antibacterial
- Critical Radiant Flux ASTM E648
- Resistance To Light ASTM F1515
- Static Load ASTM F970-17
- Smoke Density ASTM E662
- Staining Resistance ASTM F925-13
- Heat Stability ASTM F1514-03-2013
- Impact Resistance ASTM F1265-03a
- Wear Layer Thickness ASTM F410-8(2017)
- Static Coefficient Of Friction ASTM D2047-17
- Impact Insulation Class ASTM E492-09 & ASTM E989-18
- Sound Transmission Class ASTM E90-09(2016) & ASTM E413-16



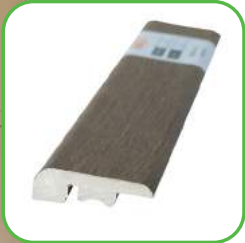
ACCESSORIES



Round Edge Skirting Molding
24*16.10*3000mm



Reducer Molding
45*10*3000mm



Ending Molding
35*10.20*3000mm



T-Shaped Molding
45.10*8.20*3000mm

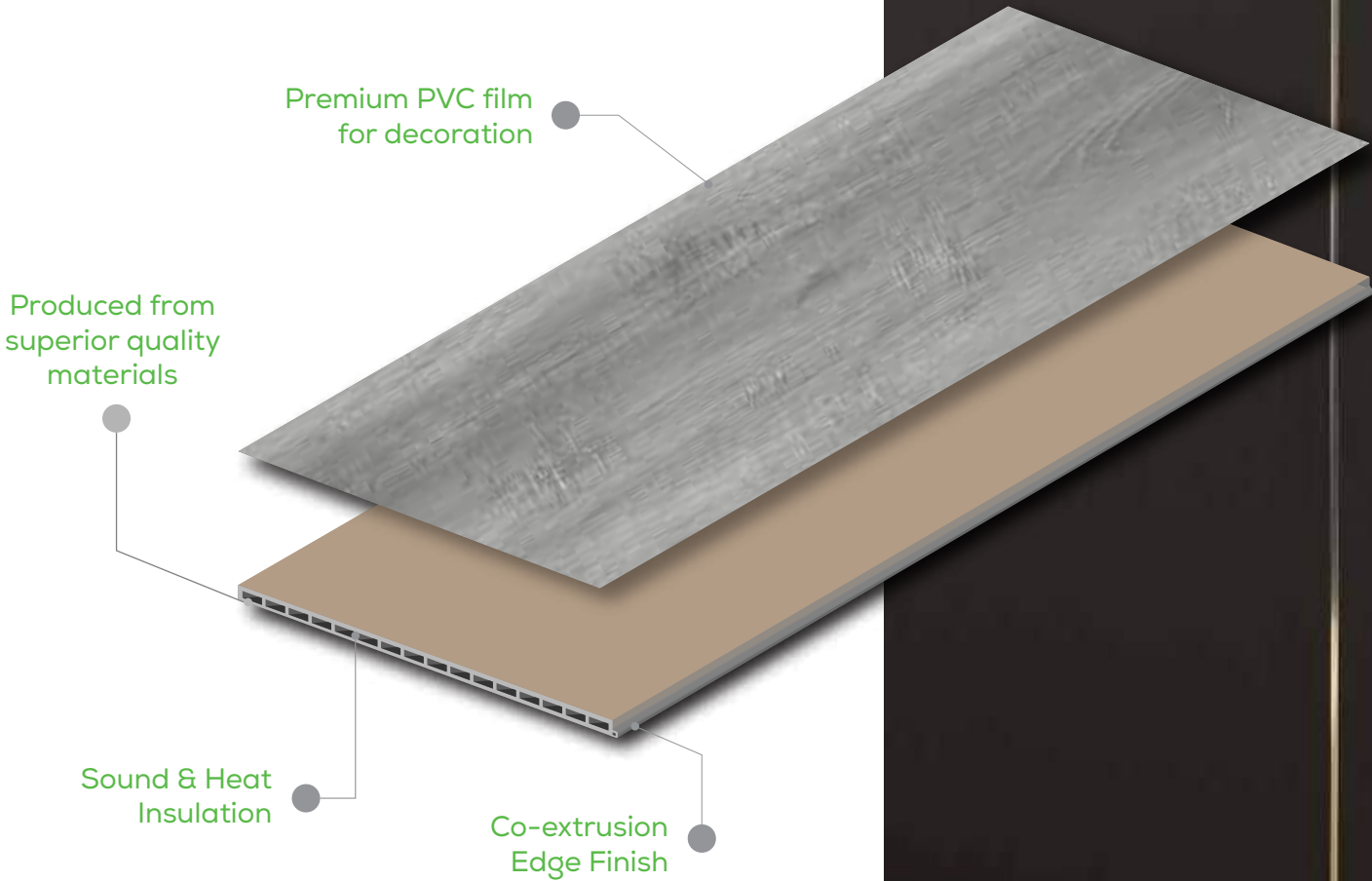


Groove Stair Nosing
110*14.50*3000mm




PVC WALL AND CEILING PANELS

Our PVC Wall and Ceiling Panels are tough, high durability and low maintenance compared to tiles or natural woods. Our productsare a perfect choice for wet areas in rooms such as kitchens and basements because it is water-proof andmildew resistant.

Dimension	Length: 2900mm (Customized)
	Width: 600mm; 400mm
Thickness	8.0mm
Surface	UV coating
Surface Style	Wood / Décor Paper / Stone



FEATURES

-  WATERPROOF AND DAMP-PROOF
-  FIRE RETARDANT
-  INSECTS, TERMITES RESISTANT
-  HIGH DURABILITY SOUND ABSORBANCE
-  EASY TO CLEAN



COLORS

Here are some colors and inspiring ideas to help you design your dream space with PVC Wall Panels.



CEILING PANELS

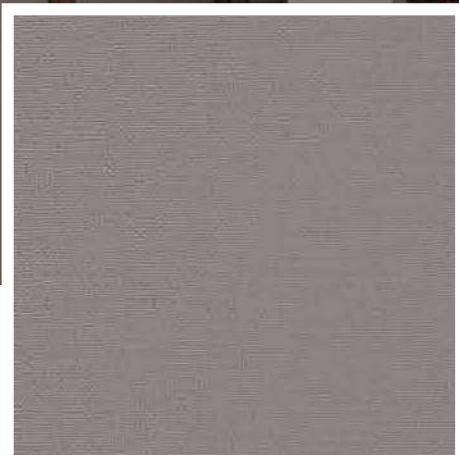


DECOR PAPER STYLE

01C

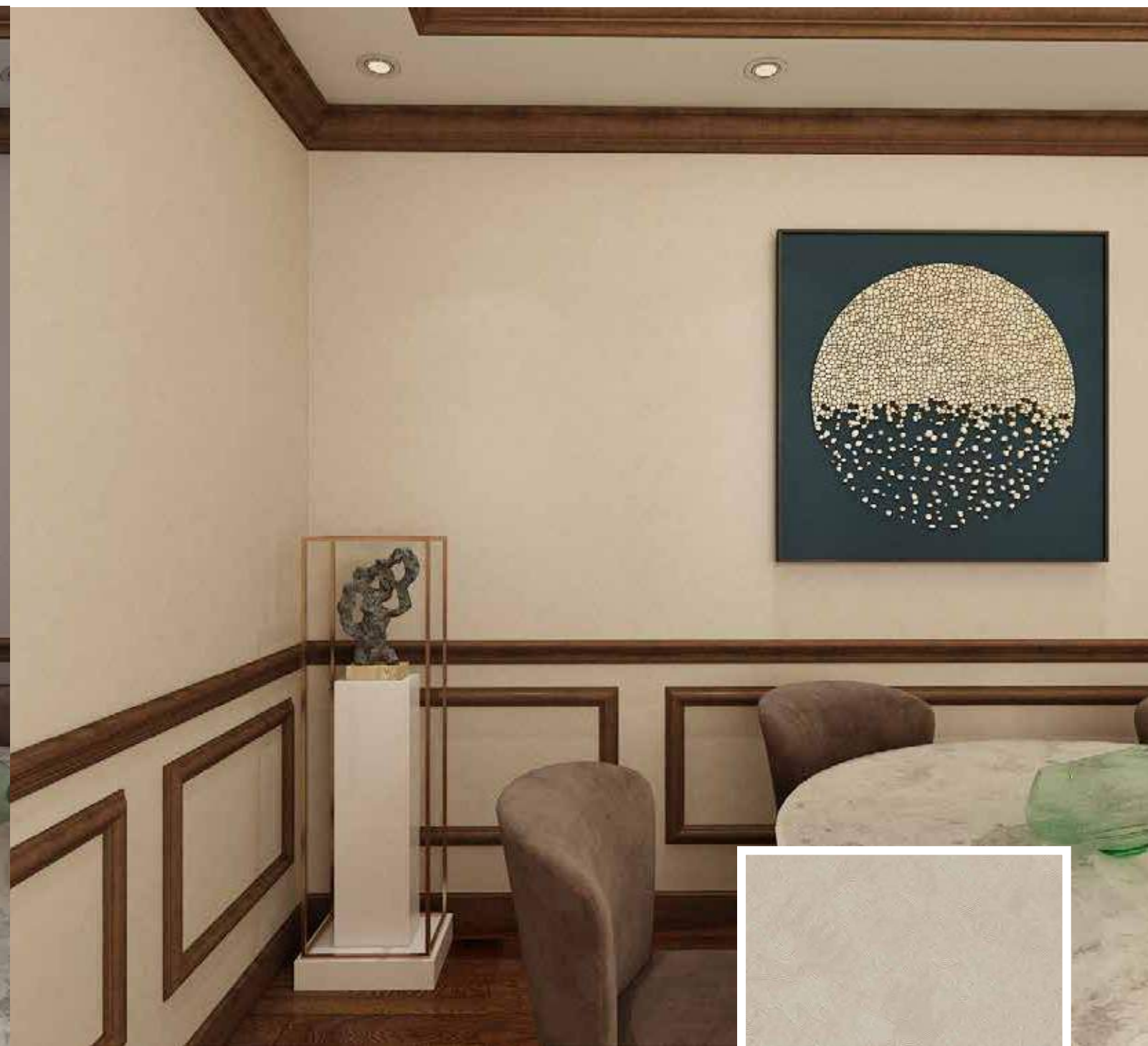


PVC WALL AND CEILING PANELS



04A

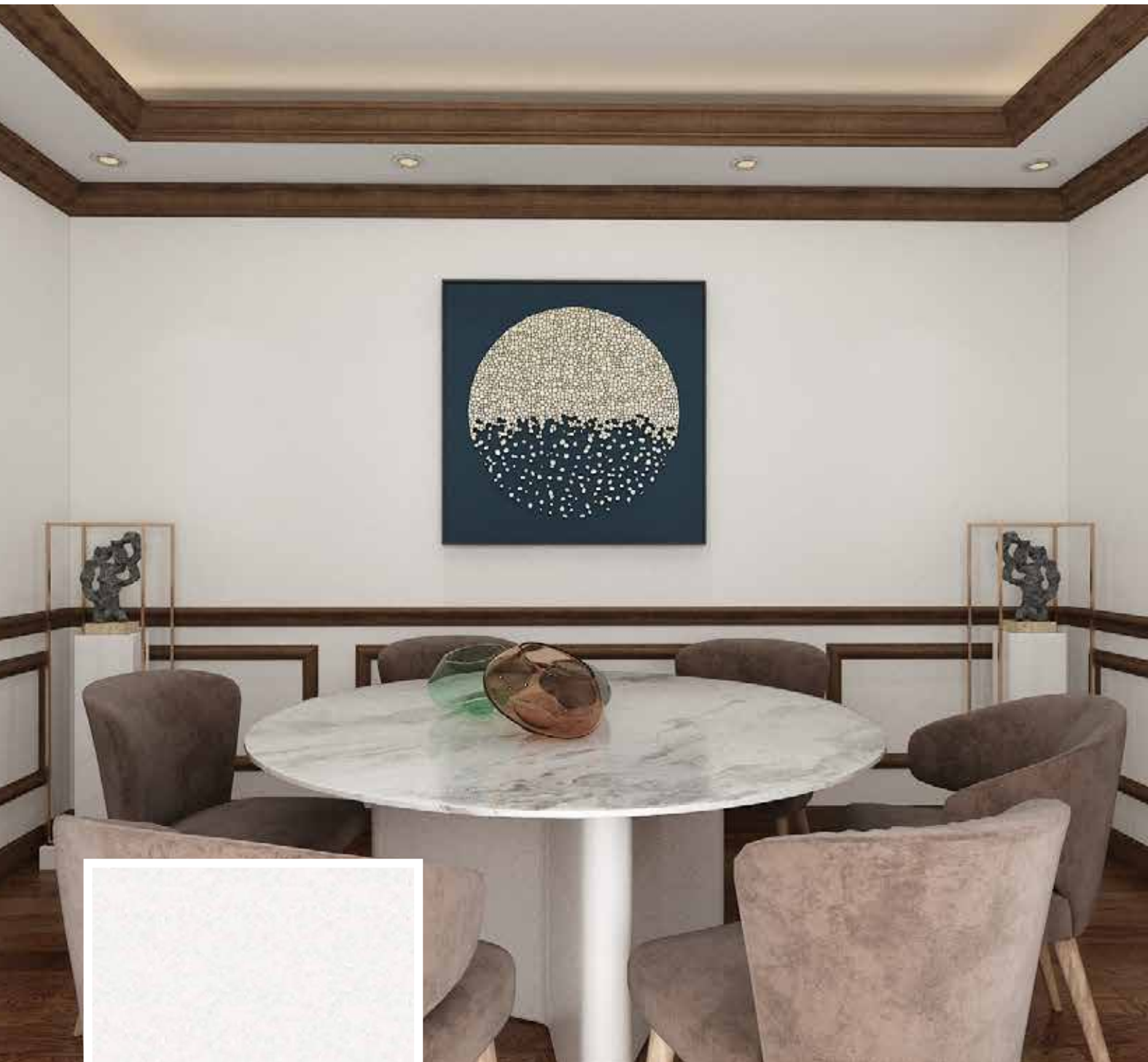
DECOR PAPER STYLE



23A

DECOR PAPER STYLE

PVC WALL AND CEILING PANELS



25A

DECOR PAPER STYLE



29A

DECOR PAPER STYLE

PVC WALL AND CEILING PANELS

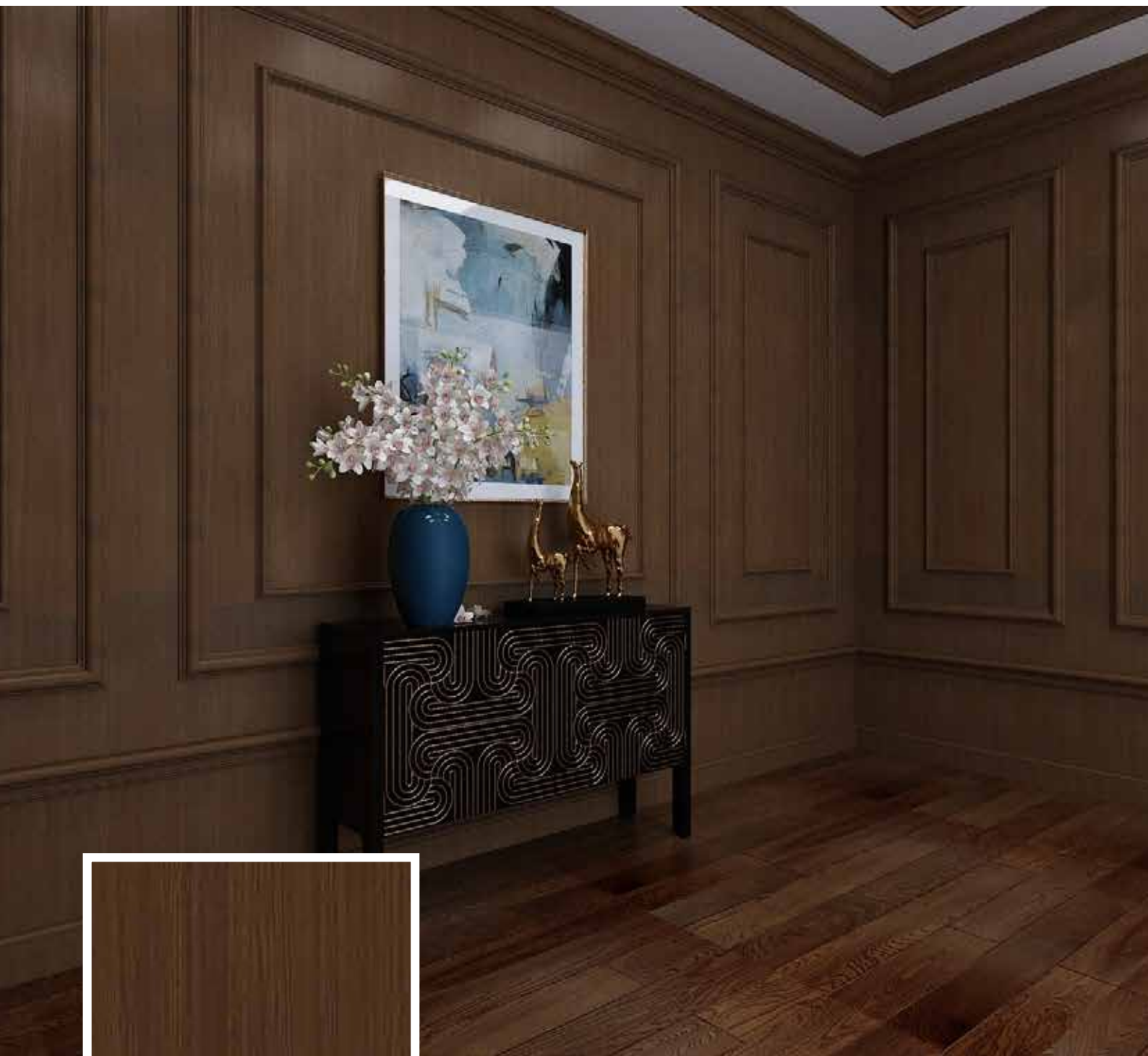


31A

DECOR PAPER STYLE

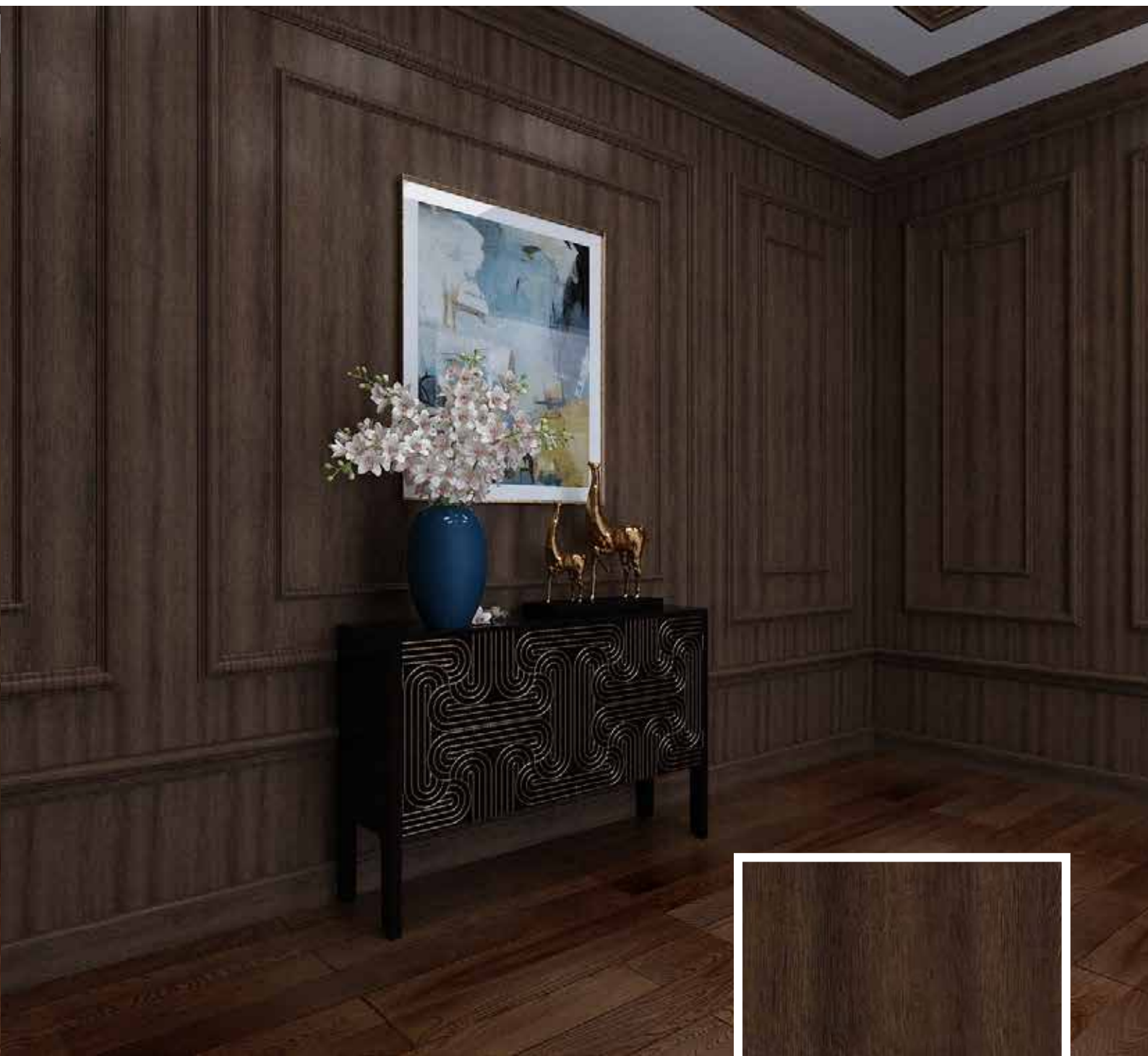


PVC WALL AND CEILING PANELS



26A

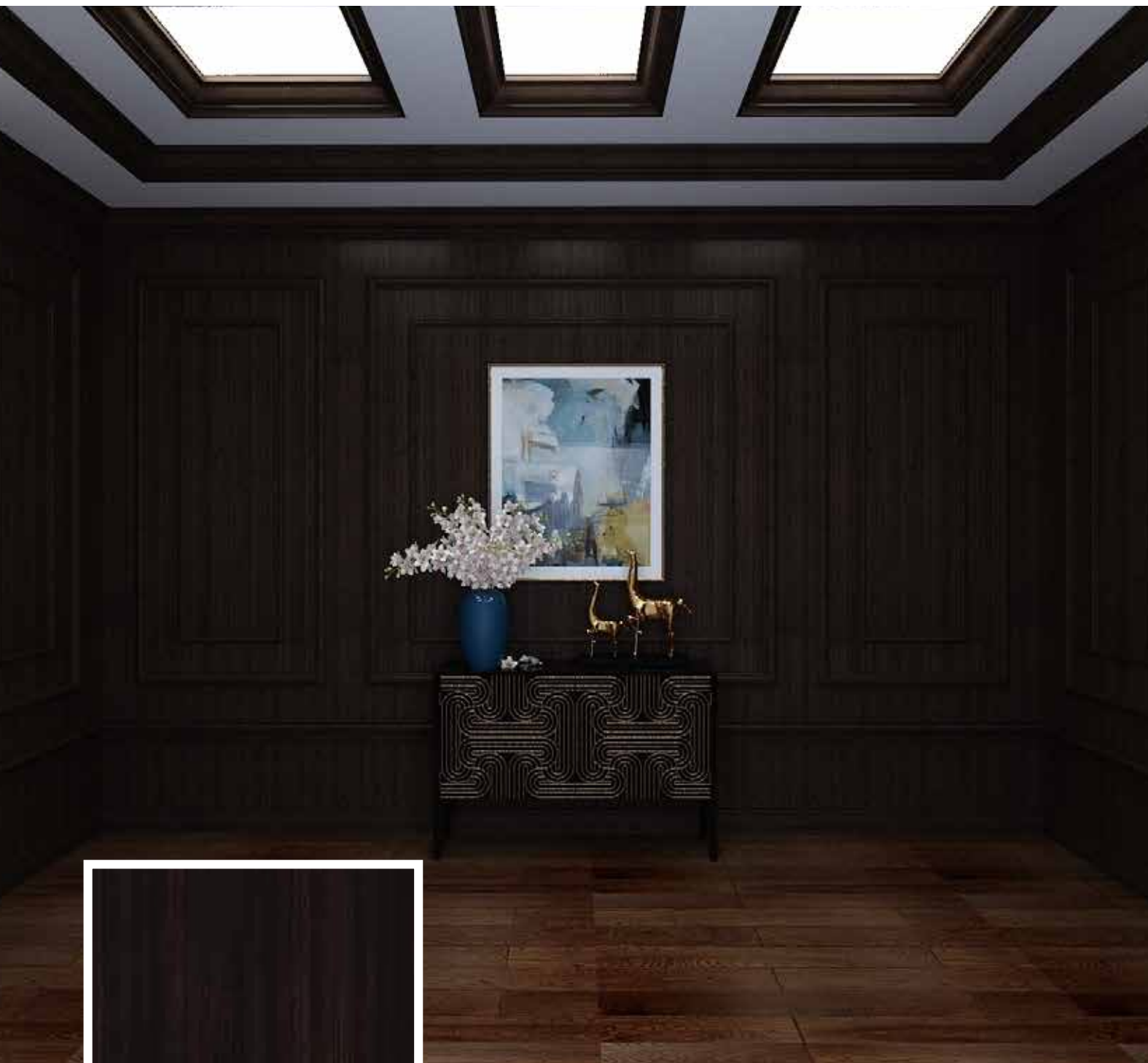
WOOD STYLE



34A

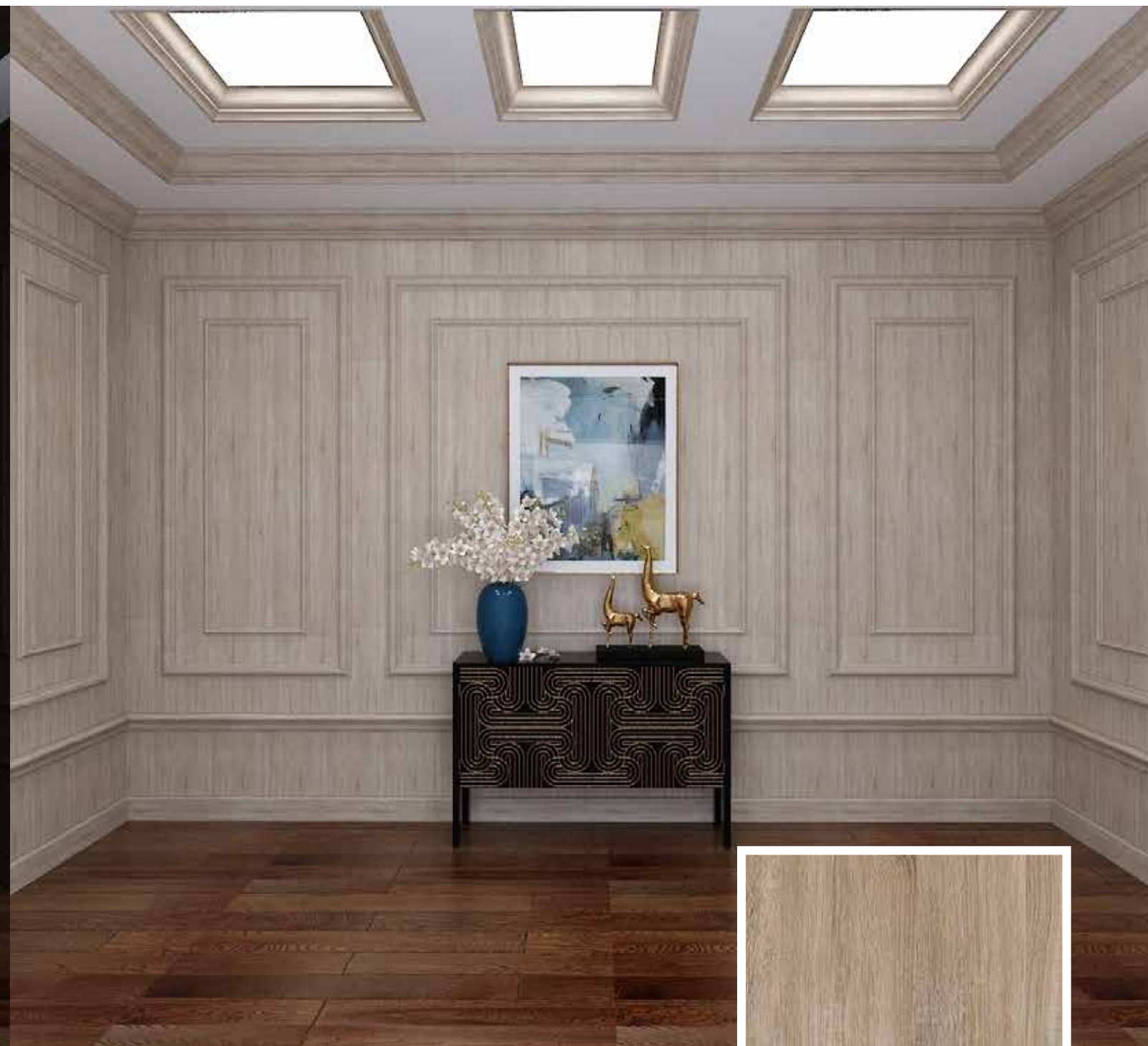
WOOD STYLE

PVC WALL AND CEILING PANELS



37A

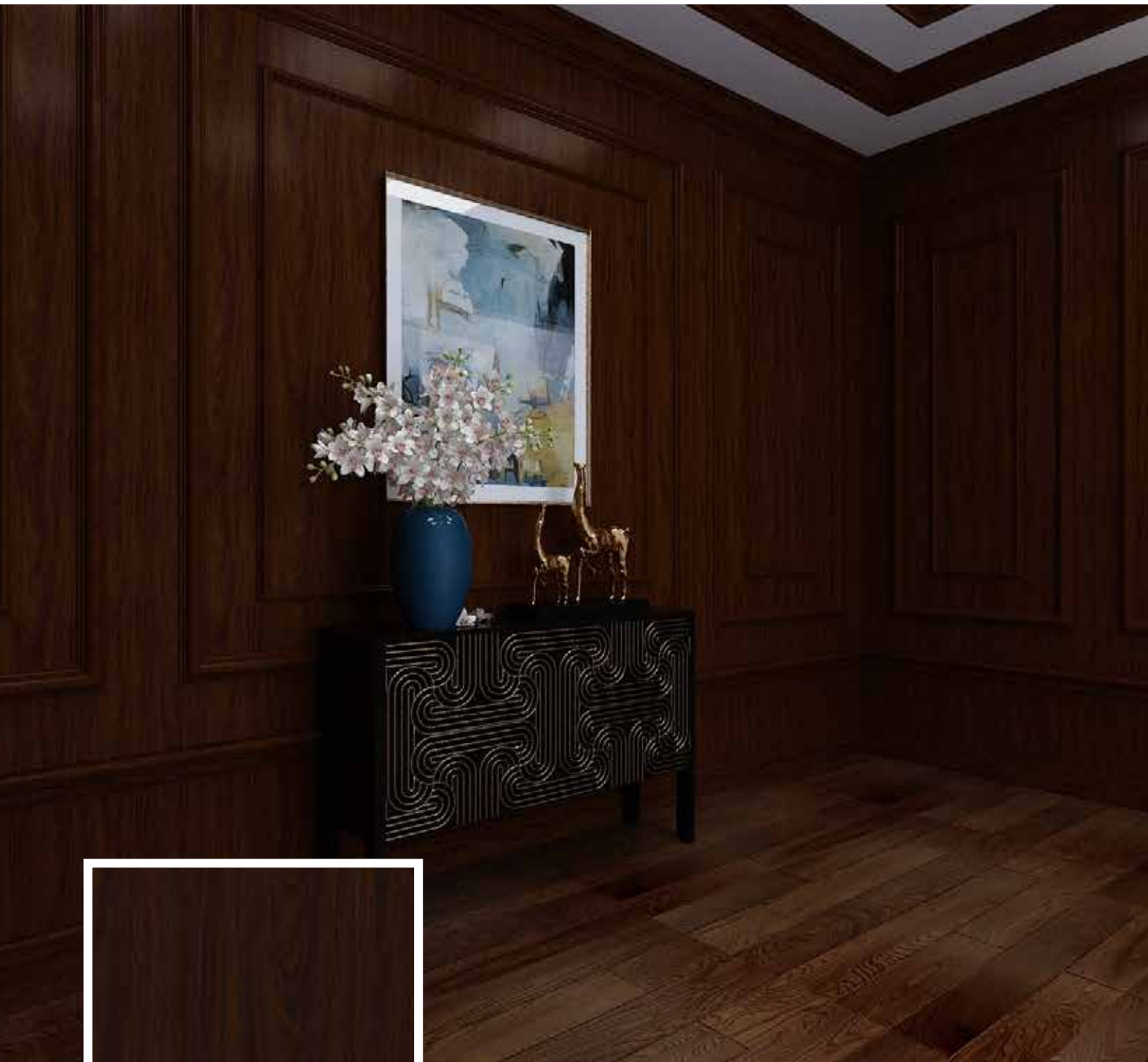
WOOD STYLE



43A

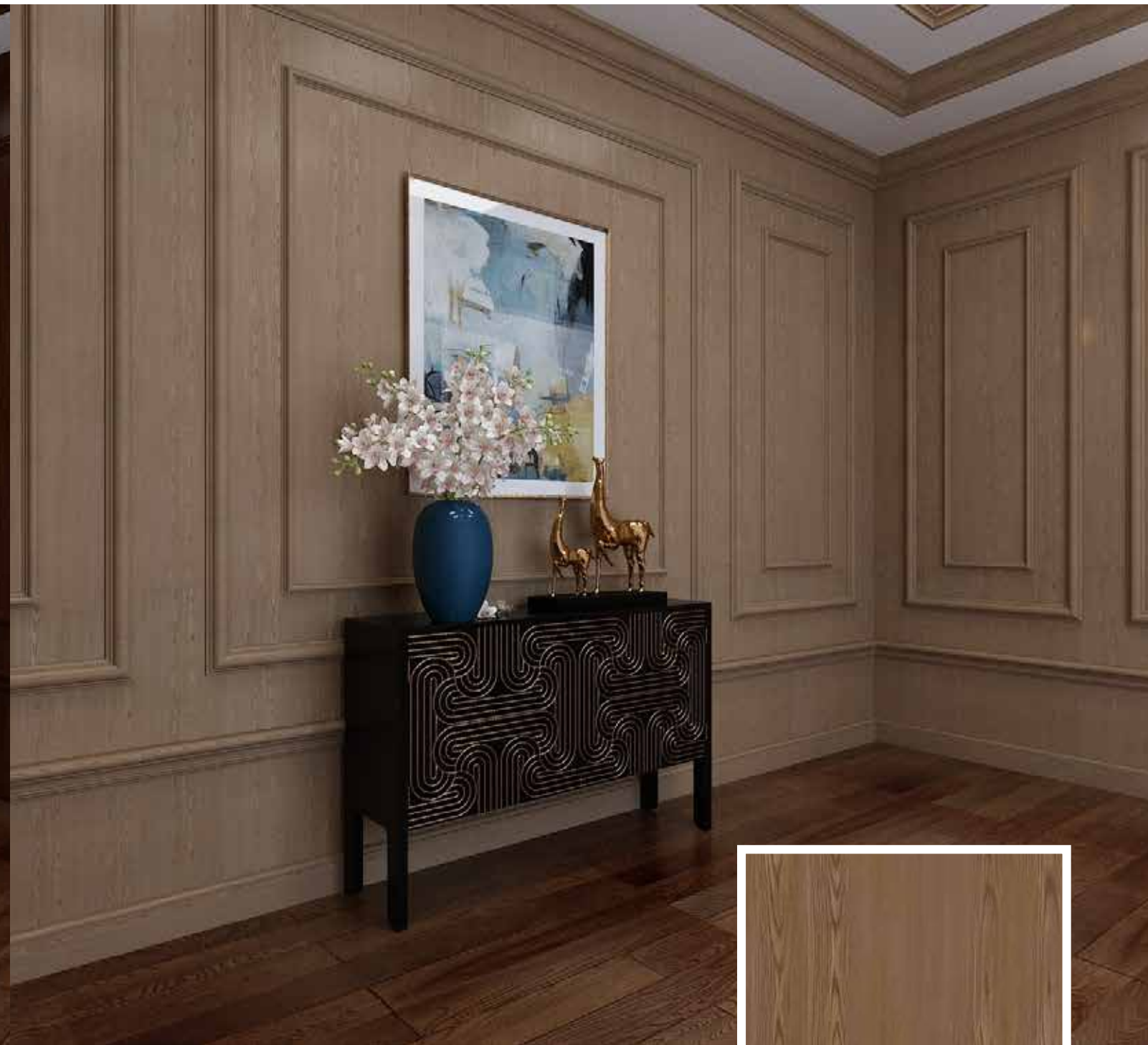
WOOD STYLE

PVC WALL AND CEILING PANELS



44A

WOOD STYLE



57A

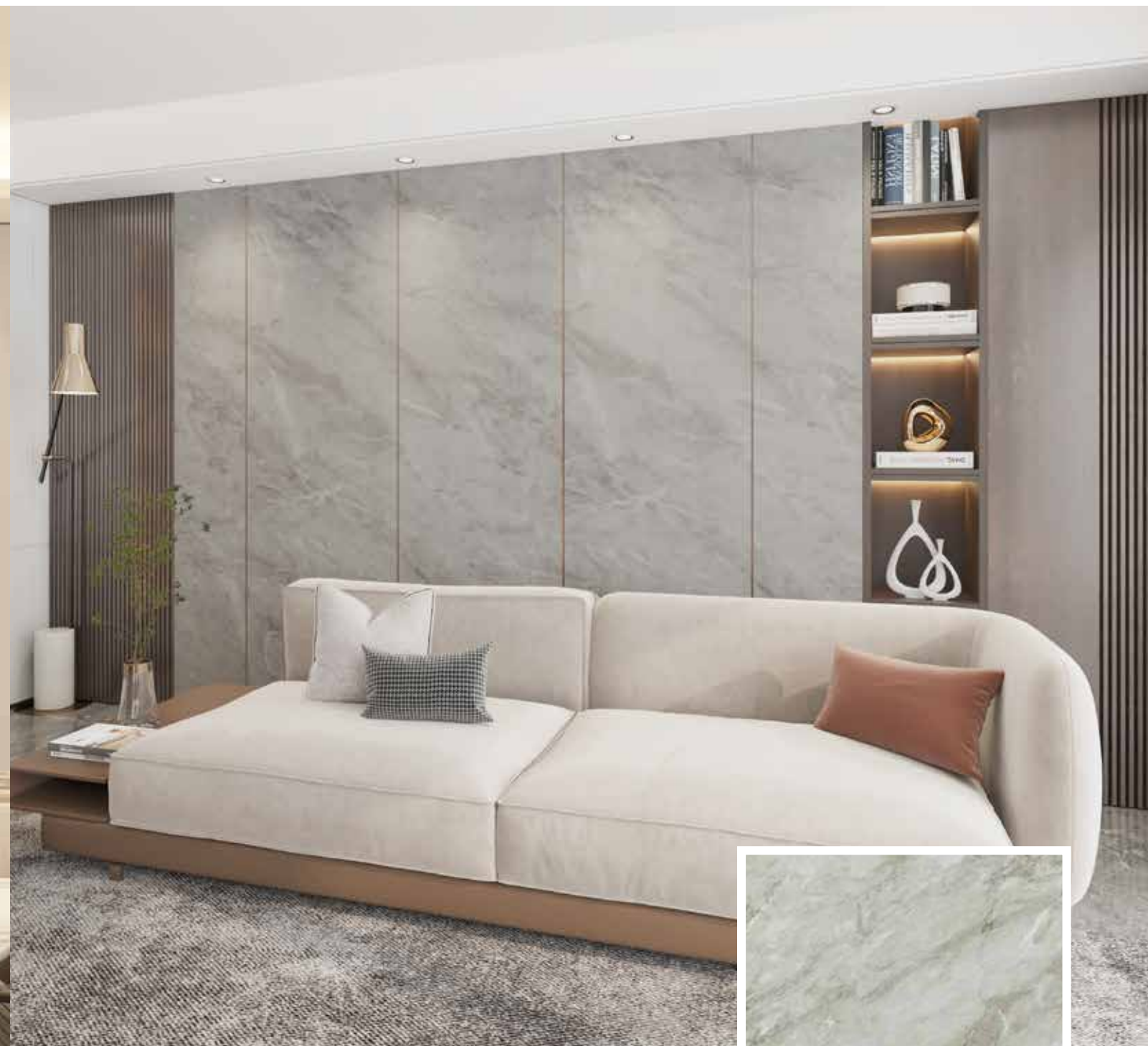
WOOD STYLE

PVC WALL AND CEILING PANELS



V62A

WOOD STYLE



V71A

STONE STYLE



Types	mm
3 rib box	200x18x3000
5 high rib box	220×19.70×3000
5 rib box	150x10x3000

ACCESSORIES

Casing (positive angle)
30*30*3000mm

Railing moulding 35
35*18.5*3000mm

Casing (negative angle)
25*10*3000mm

Railing moulding 60
60*28*3000mm

Cornice molding 100
100*26*3000mm

Skirting board 100
100*15*3000mm

Chair railing 45
45*20*3000mm

Chair railing 80
80*29*3000mm

Square molding
60*30*3000mm

Chair railing 90
90*30*3000mm

Cornice molding 135
135*33*3000mm

Skirting board 150
150*20*3000mm

Chair railing 60
60*23.5*3000mm

Door/window frame
48*50*3000mm

An Cuong Building Materials

89



Casing (positive angle)
30*30*3000mm

Railing moulding 35
35*18.5*3000mm



Casing (negative angle)
25*10*3000mm



Railing moulding 60
60*28*3000mm



Cornice molding 100
100*26*3000mm



Skirting board 100
100*15*3000mm



Chair railing 45
45*20*3000mm



Chair railing 80
80*29*3000mm



Square molding
60*30*3000mm



Chair railing 90
90*30*3000mm



Cornice molding 135
135*33*3000mm



Skirting board 150
150*20*3000mm



Chair railing 60
60*23.5*3000mm



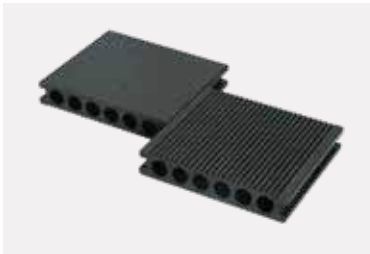
Door/window frame
48*50*3000mm

EXTERIOR PRODUCT

WPC DECKING

Our products are designed with careful research to achieve superior appearance and structure compared to other products in the same segment. Wood Plastic Composite Decking not only has outstanding advantages of the materials but also has diverse applications.

Product



Single extrusion decking (Hollow)
140*25*2900 mm
(or optional length)



Single extrusion decking (Hollow)
140*21*2900 mm
(or optional length)



Co-extrusion decking (Hollow)
138*23*2900 mm
(or optional length)



Single extrusion decking (Hollow)
145*21*2900 mm
(or optional length)



Single extrusion decking (Hollow)
145*25*2900 mm
(or optional length)

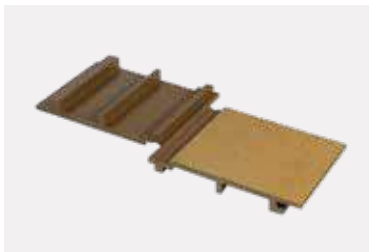


Co-extrusion decking (Solid)
140*23*2900 mm
(or optional length)

WPC WALL PANELS



Wall panel Great-wall design



Wall panel single layer



Conner



Single extrusion side panel,
sanded both sides



Fence



INTERLOCKING TILE



Feature



WATERPROOF
NO WARPING
NO SHRINKAGE



DIVERSE TEXTURES
AND COLORS



INSECTS
TERMITES
MOLD RESISTANT



COLOR STABILITY AND
WEATHER RESISTANCE



EASILY INSTALL AND MAINTAIN
LOW INSTALLATION COSTS



ENVIRONMENTALLY
FRIENDLY RECYCLED
MATERIALS