

## AN CUONG HIGH-TECH BUILDING MATERIALS

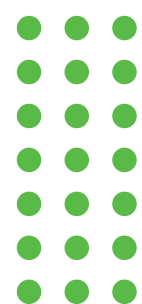
**A** KM #47, National Highway 5, Viet Hoa Ward, Hai Phong City, Vietnam  
**P** (+84) 963 017 57 | **E** info@ancuongflooring.com

## AN CUONG HIGH-TECH BUILDING MATERIALS., JSC PRODUCT CATALOG

[www.ancuongflooring.com](http://www.ancuongflooring.com)







# TABLE OF CONTENTS

## AN CUONG BUILDING MATERIALS., JSC

4-5

About Us  
Overview

## AN PHAT HOLDINGS

6-7

Introduction  
Business Systems

## PRODUCTS

8-91

Interior Product  
Exterior Product





# AN CUONG BUILDING MATERIALS

## ABOUT US

An Cuong High-tech Building Materials.,JSC is a subsidiary of An Phat Holdings - A leading enterprise in Southeast Asia that produces high-tech and eco-friendly plastics. We supply interior and exterior finishing products that adhere to various health and quality standards for global markets.



## OVERVIEW



### Exporting Market

The United States, Europe, Australia, New Zealand, Asia



### Location

KM #47, National Highway 5, Viet Hoa Ward,  
Hai Phong City, Vietnam

## Certificates





# AN PHAT HOLDINGS

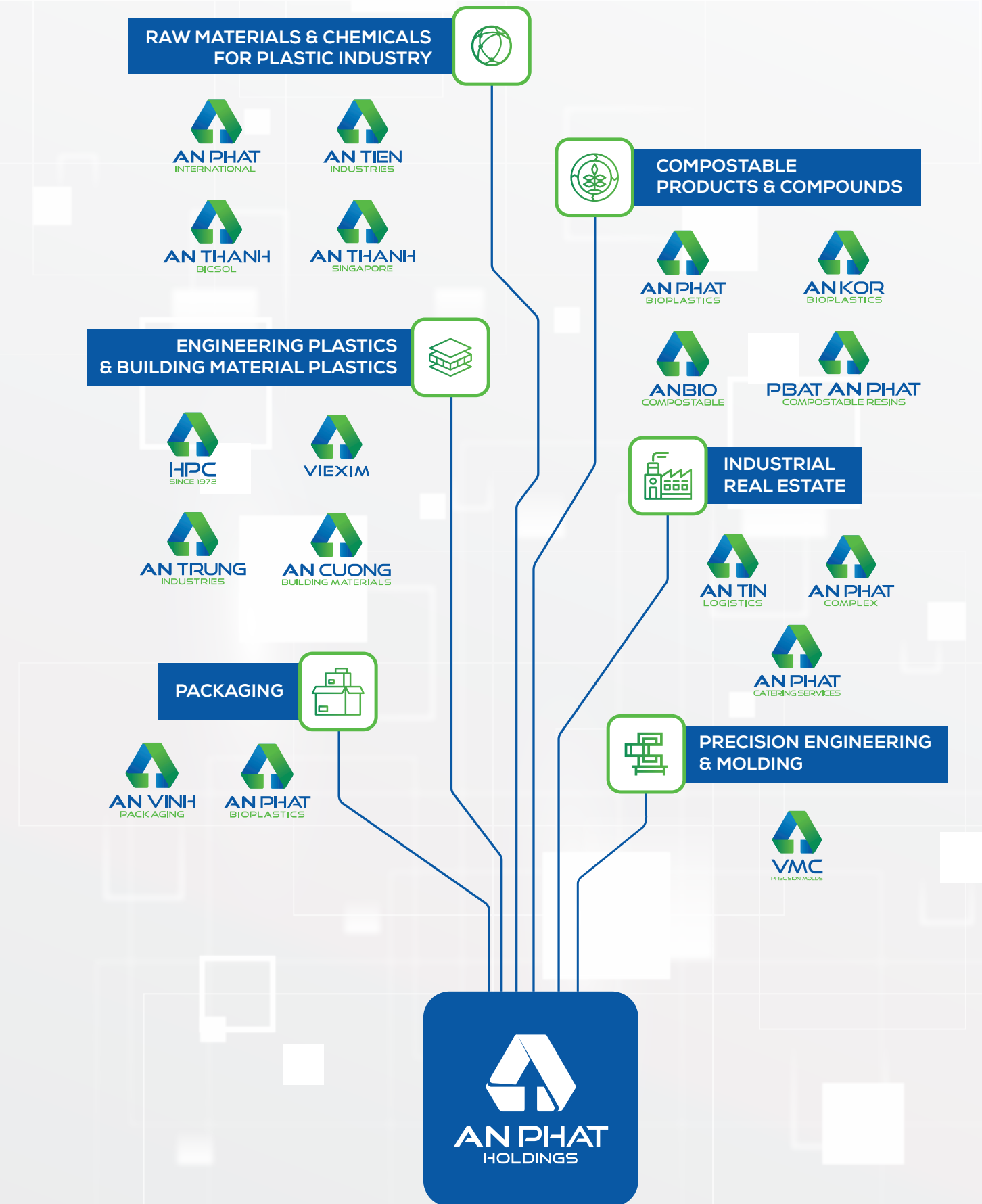
## GENERAL INTRODUCTION

An Phat Holdings is the leading high-tech and environmentally friendly plastic corporation in Southeast Asia. With many company members in the plastic ecosystem, we have affirmed the brand name, prestige and position to bring our products to overseas markets such as The United States, Europe, United Arab Emirates, Japan, Korea, Singapore, Taiwan, Philippines, etc.



An Cuong Building Materials

## BUSINESS ECOSYSTEM



An Cuong Building Materials



# BUILDING MATERIALS PRODUCT

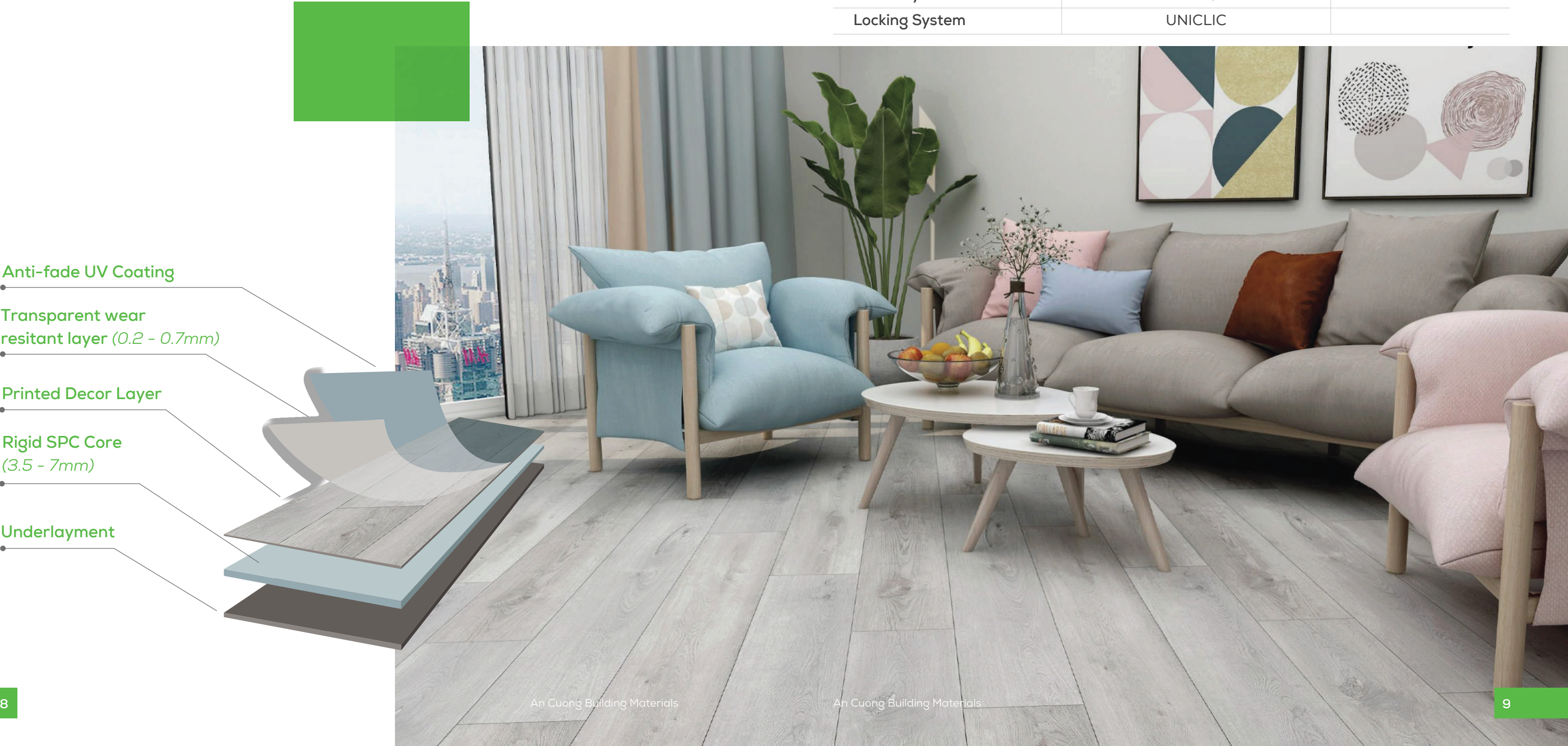
We supply interior and exterior finishing products that adhere to various health and quality standards to worldwide markets.

## INTERIOR PRODUCTS

### SPC FLOORING

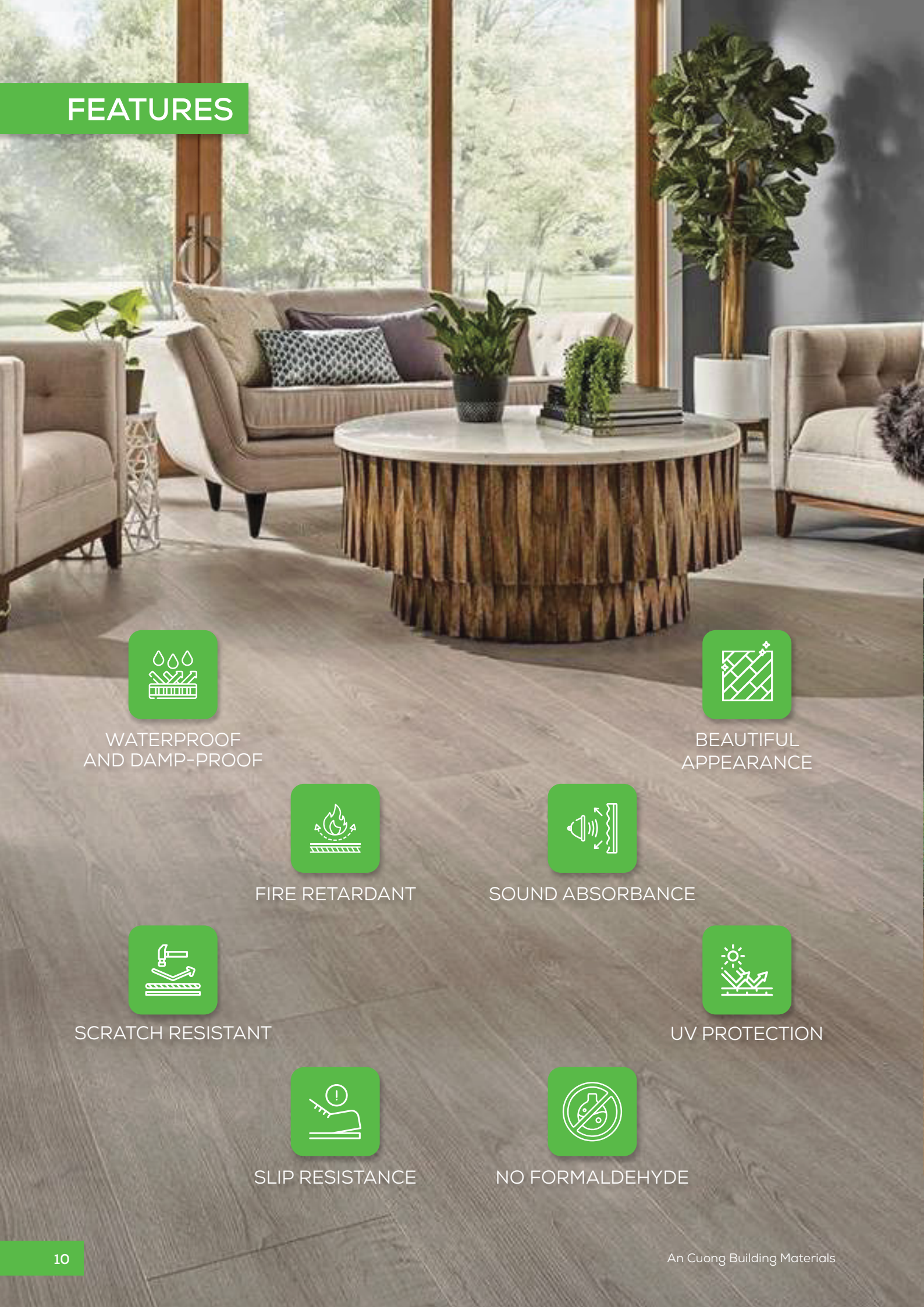
With the latest technology in floor covering, SPC Flooring offers you many benefits: It is stable, durable, 100% waterproof, and scratch-resistant. SPC can be easily installed on a variety of subfloors including concrete or existing vinyl flooring. SPC flooring is completely formaldehyde-free and uses components that are safe for residential and commercial installations.

	mm	inch
Dimension (Customized)	1220 x 183	48"x7"
	1220 x 228	48"x9"
	1524 x 228	60"x9"
	1830 x 228	72" x 9"
	610 x 305 (Stone)	24" x 12"
	650 x 120 (Herringbone)	23.6" x 4.7"
	650 x 150 (Herringbone)	25.6" x 5.9"
Thickness	3.5 – 8.0mm	
Wearlayer	0.2 – 0.7mm	
Surface	UV coating	
Surface Texture	Wood, Marble, EIR	
Underlayment	IXPE 1.0mm, 1.5mm	
Locking System	UNICLIC	





FEATURES



WATERPROOF  
AND DAMP-PROOF



BEAUTIFUL  
APPEARANCE



FIRE RETARDANT



SOUND ABSORBANCE



SCRATCH RESISTANT



UV PROTECTION



SLIP RESISTANCE



NO FORMALDEHYDE

You can install it quickly and easily on any surface. It is versatile and suitable for various types of projects.

CONCRETE SUBFLOOR



TILE SUBFLOOR





LVT FLOORING

LVT (Luxury Vinyl Tile) flooring is a modern adhesive floor covering. With its realistic simulation of materials like wood, stone, and tile, LVT flooring brings luxury and diversity to any interior space.

Dimension (Customized)	914x152 mm
	1220x178 mm
	610x305 mm
Thickness	1-5 mm
Wear layer	0.2 mm
	0.3 mm
	0.5 mm
Surface	UV coating

ANTI-FADE UV COATING

Reduces fading caused by sunlight near windows or in other indoor environments.

TRANSPARENT WEAR RESISTANT LAYER

Provides abrasion and scratch resistance for the surface.

DECORATIVE LAYER

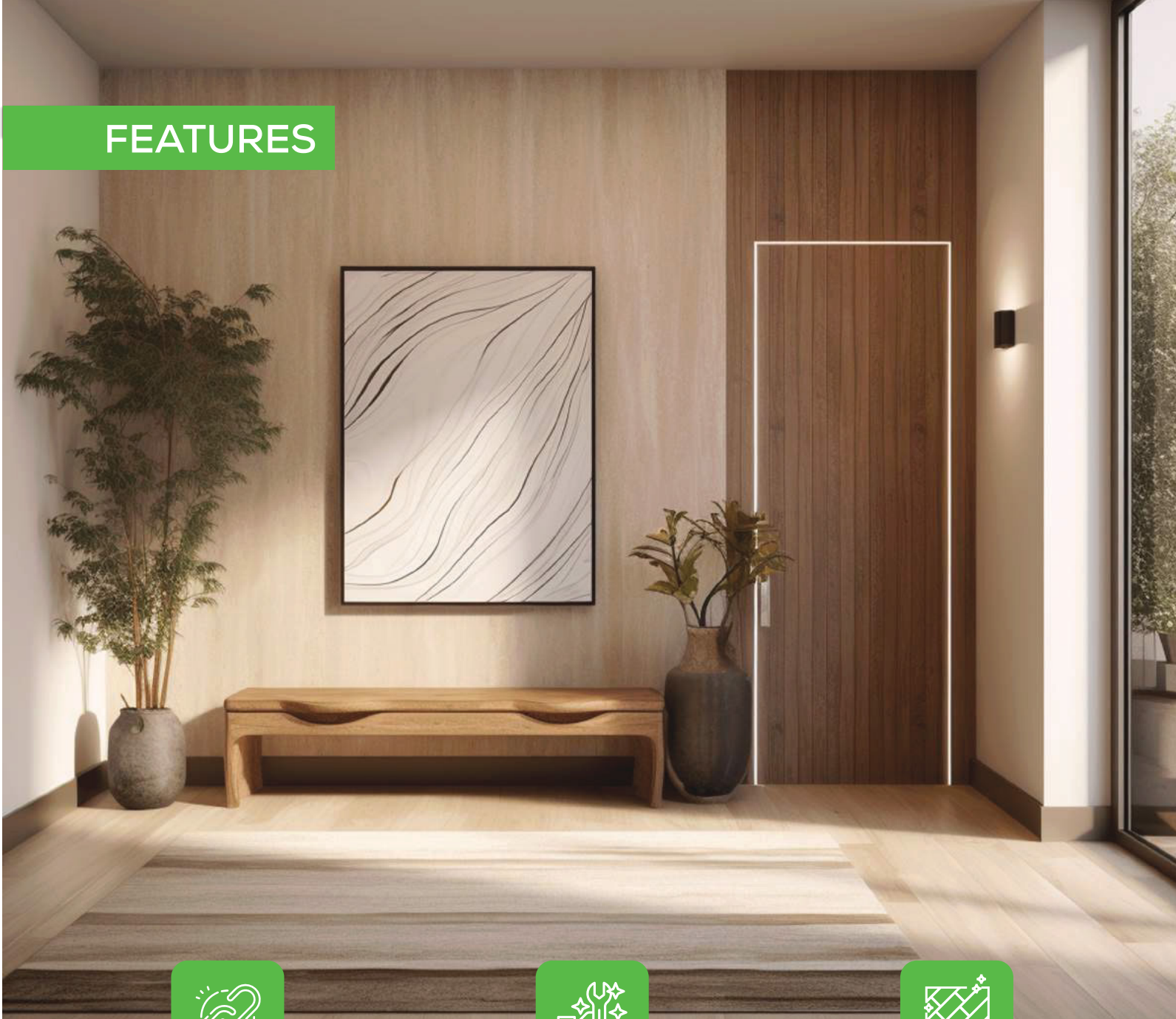
Offers a variety of modern designs that mimic the natural beauty of wood or stone.

CORE LAYER

Made from high-quality materials to provide water resistance.



FEATURES



DURABLE



EASY TO MAINTAIN



BEAUTIFUL APPEARANCE

INSTALLATION GUIDE

Adhesive	Temperature	Subfloor
Parterre Universal Adhesive Recommended. Guaranteeing up to 99% RH when used in new construction and up to 95% RH for use in pre-existing buildings.	Install between 65 - 80°F (+/- 5°) and under 80% R.H. (Relative Humidity) (+/-5%).	Concrete, APA-approved plywood, radiant heat subfloors, VCT, Gypsum, Terrazzo.



# COLORS

Whether you prefer the warmth of wood or the elegance of stone, we offer a variety of options to suit your aesthetic preferences.

100<sup>++</sup>

# DORING COLORS

OAK SA18





# SPC/LVT FLOORING COLORS



OAK SA11



WALNUT SA15





# SPC/LVT FLOORING COLORS



OAK SA46



OAK SA61





# SPC/LVT FLOORING COLORS



OAK SA88



STONE SA102





# SPC/LVT FLOORING COLORS



OAK SA141



OAK SA142

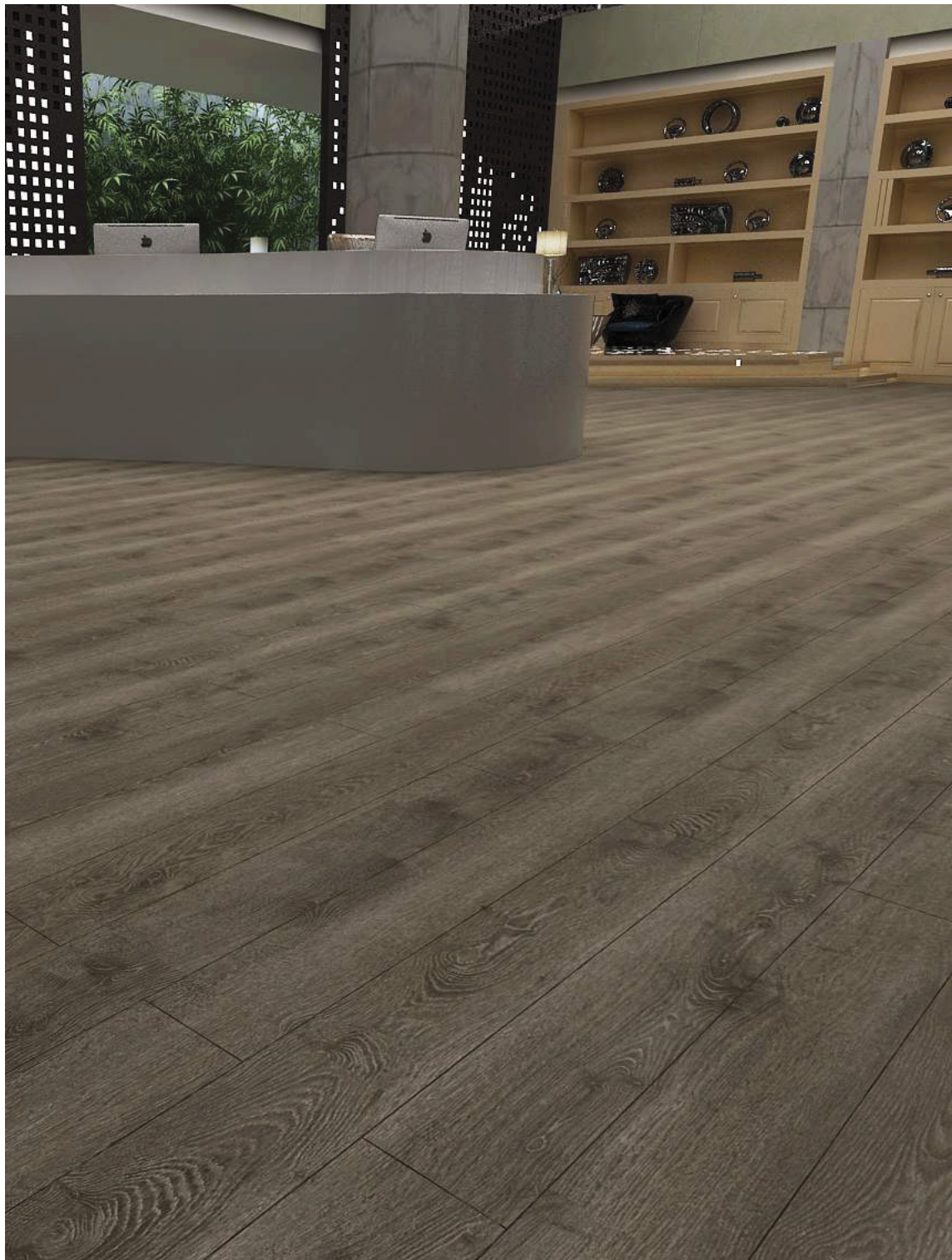




# SPC/LVT FLOORING COLORS



OAK SA143



OAK SA144





# SPC/LVT FLOORING COLORS

OAK SA151



WALNUT SA152





# SPC/LVT FLOORING COLORS



OAK SA155



OAK SA156





# SPC/LVT FLOORING COLORS



OAK SA166



OAK SA263





# SPC/LVT FLOORING COLORS

FIR WOOD SA237



ANCIENT PINE SA241





# SPC/LVT FLOORING COLORS



OAK SA281



MAPLE SA308





# SPC/LVT FLOORING COLORS



OAK SA318



OAK SA343





# SPC/LVT FLOORING COLORS



MAPLE SA345



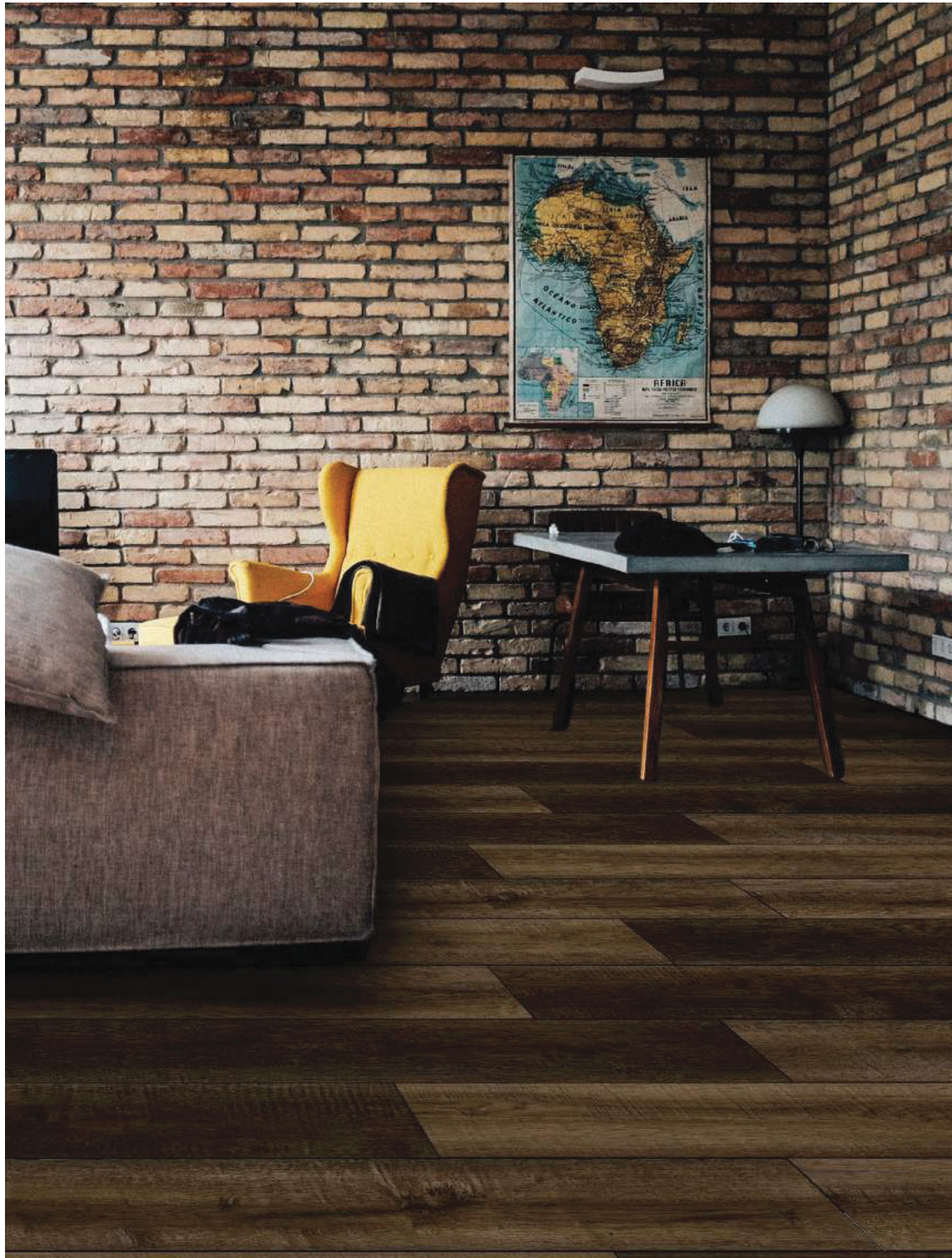
OAK SA352



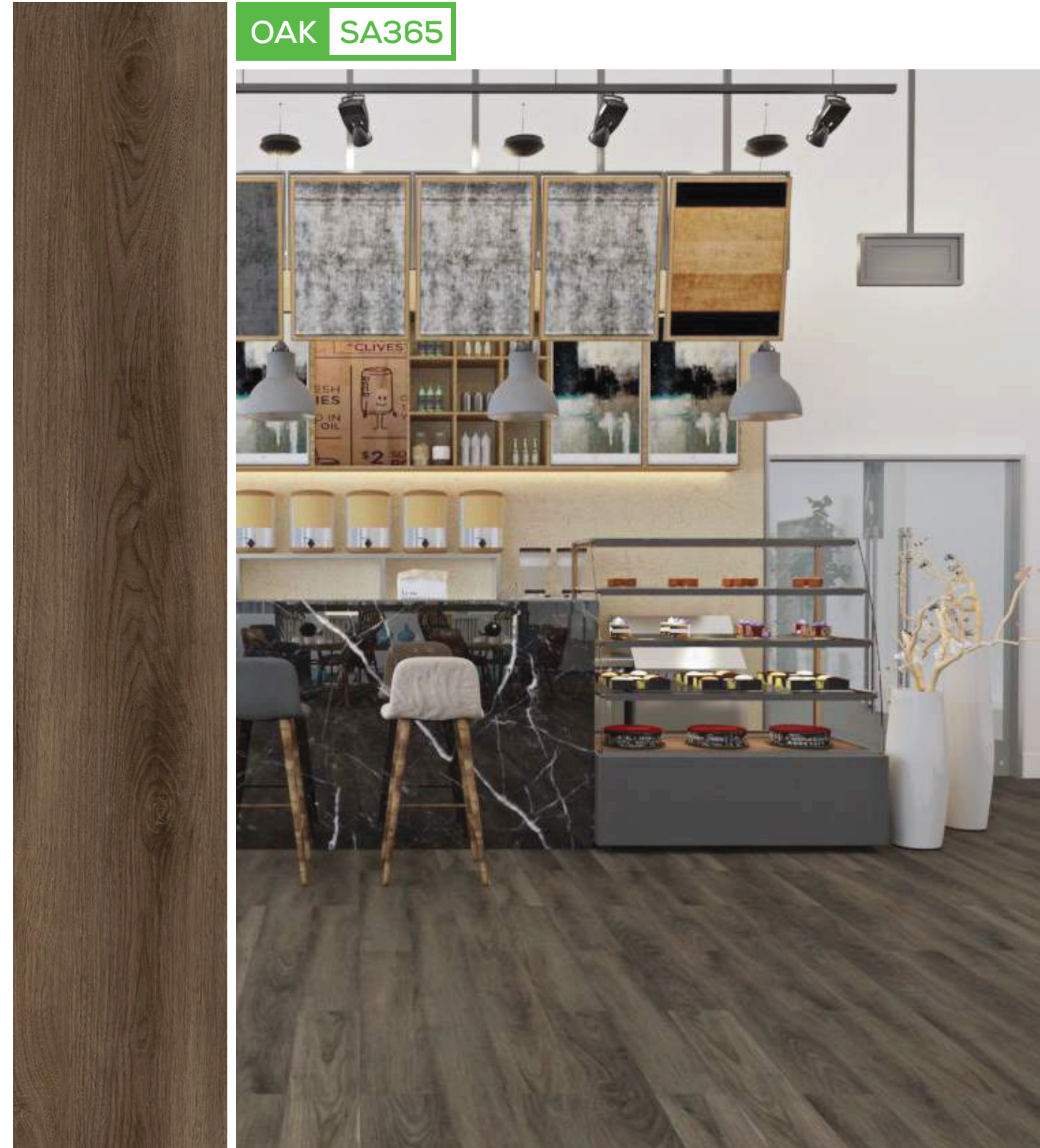


# SPC/LVT FLOORING COLORS

OAK SA144



OAK SA365





# SPC/LVT FLOORING COLORS



OAK SA368



ELM WOOD SA371





# SPC/LVT FLOORING COLORS



OAK SA374



OAK SA377





# SPC/LVT FLOORING COLORS



WALNUT SA379



WALNUT SA515



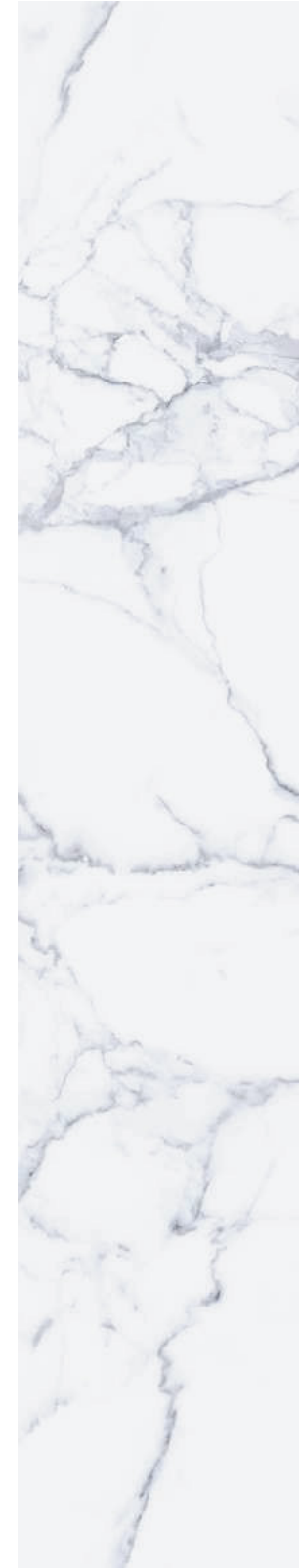


# SPC/LVT FLOORING COLORS

OAK SA88



STONE SA102





# SPC/LVT FLOORING COLORS



OAK SA318



OAK SA352





# SPC/LVT FLOORING COLORS



OAK SA365



OAK SA368

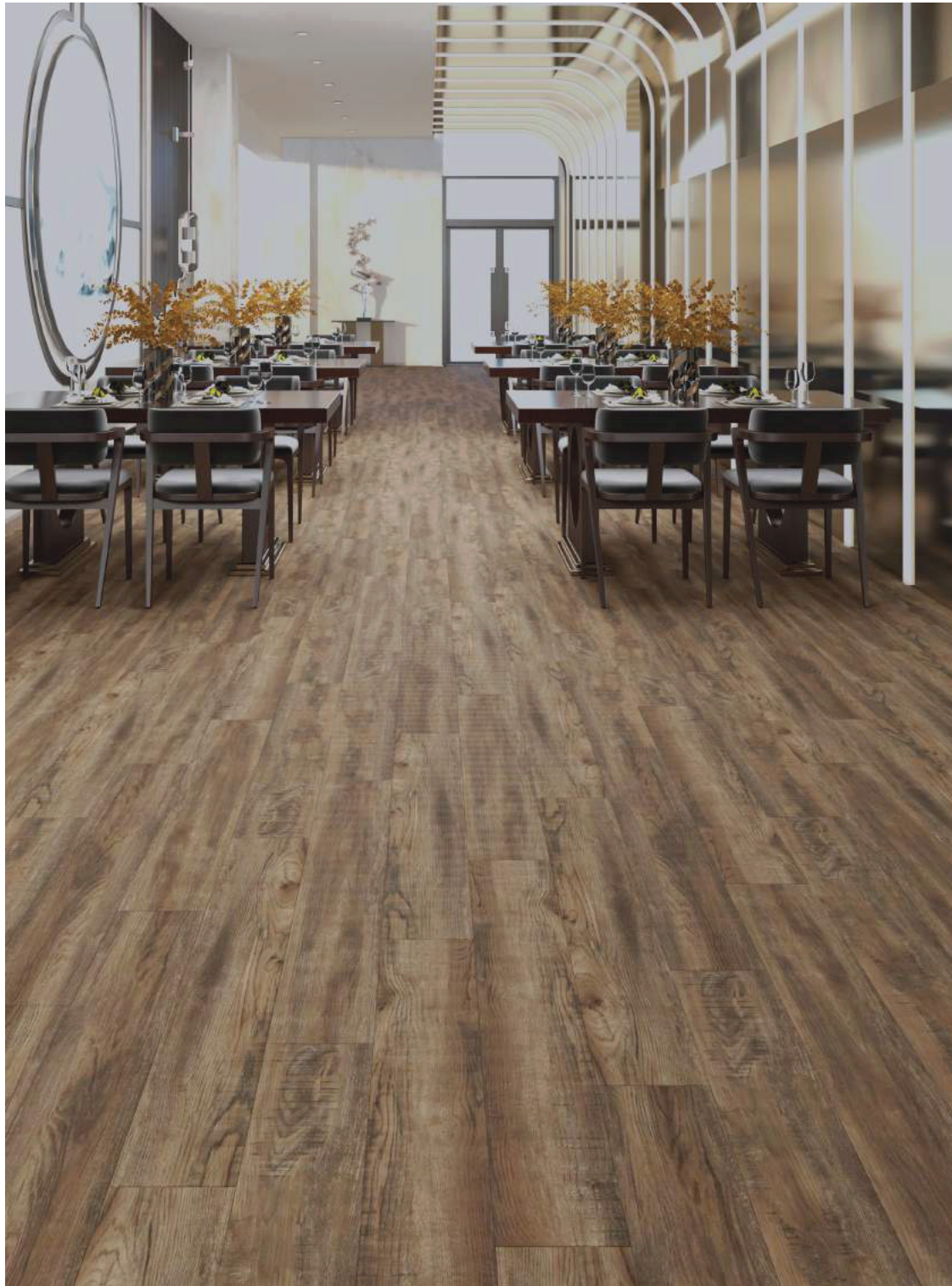




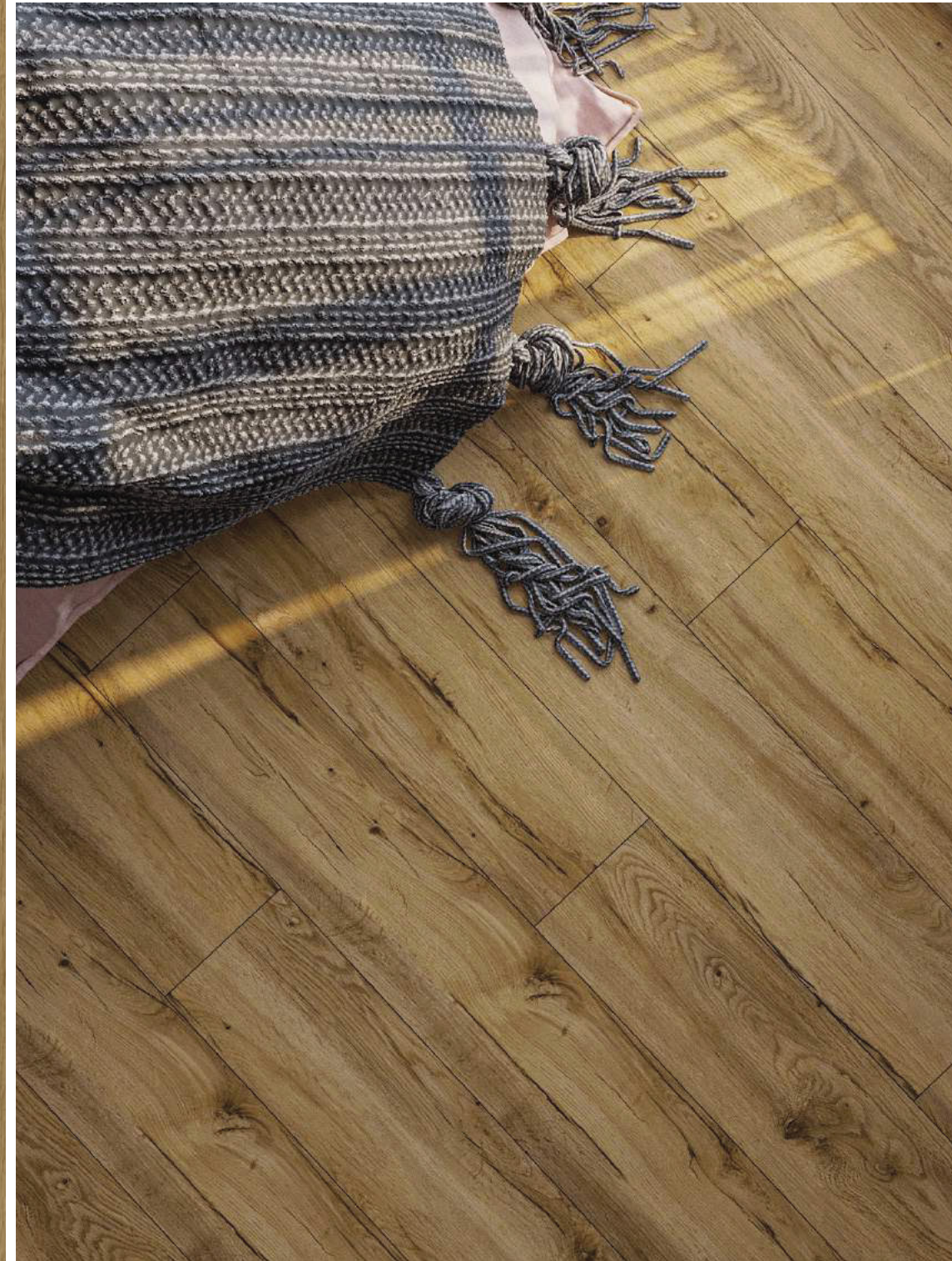
# SPC/LVT FLOORING COLORS



OAK SA377



OAK SA379

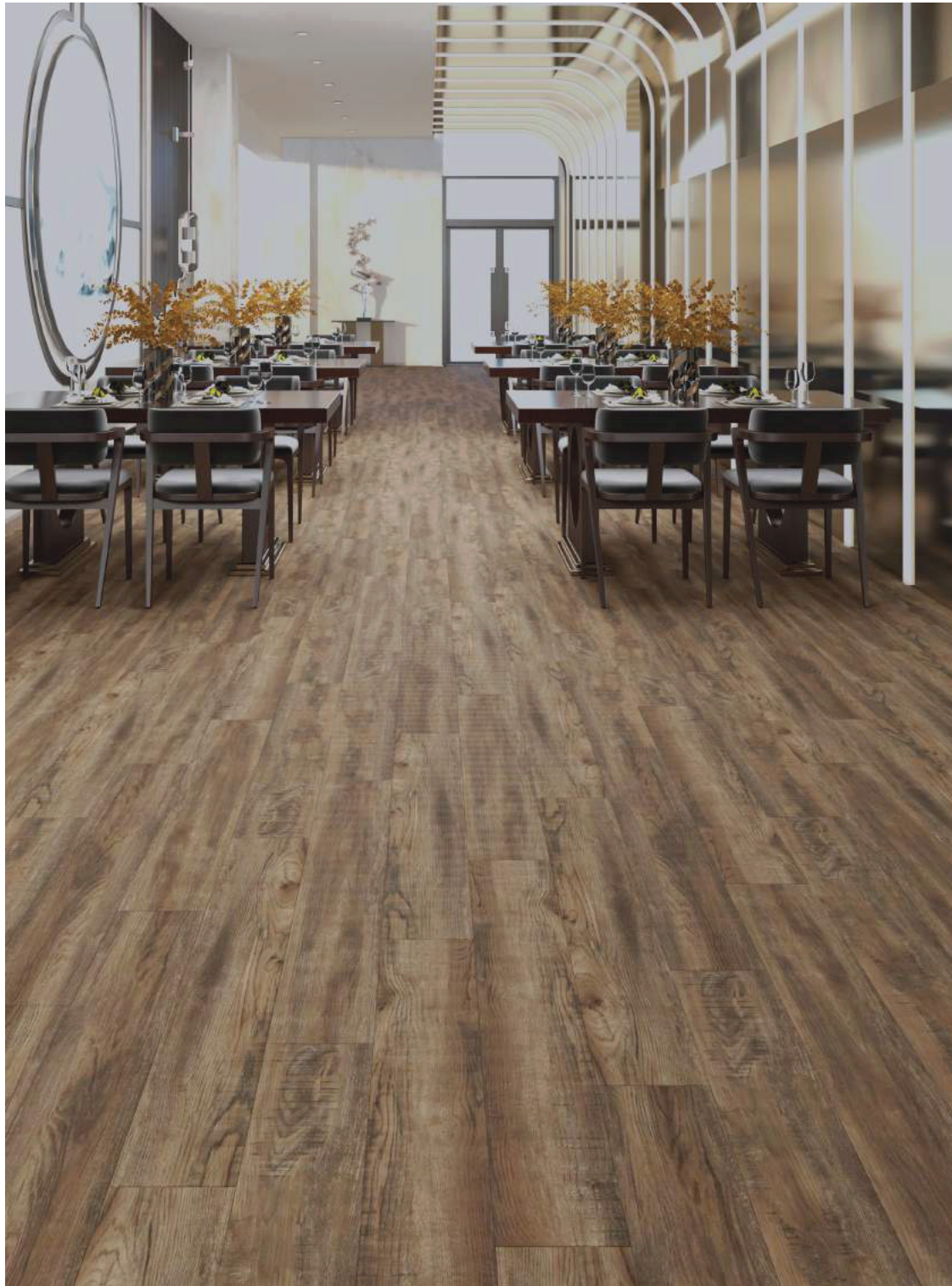




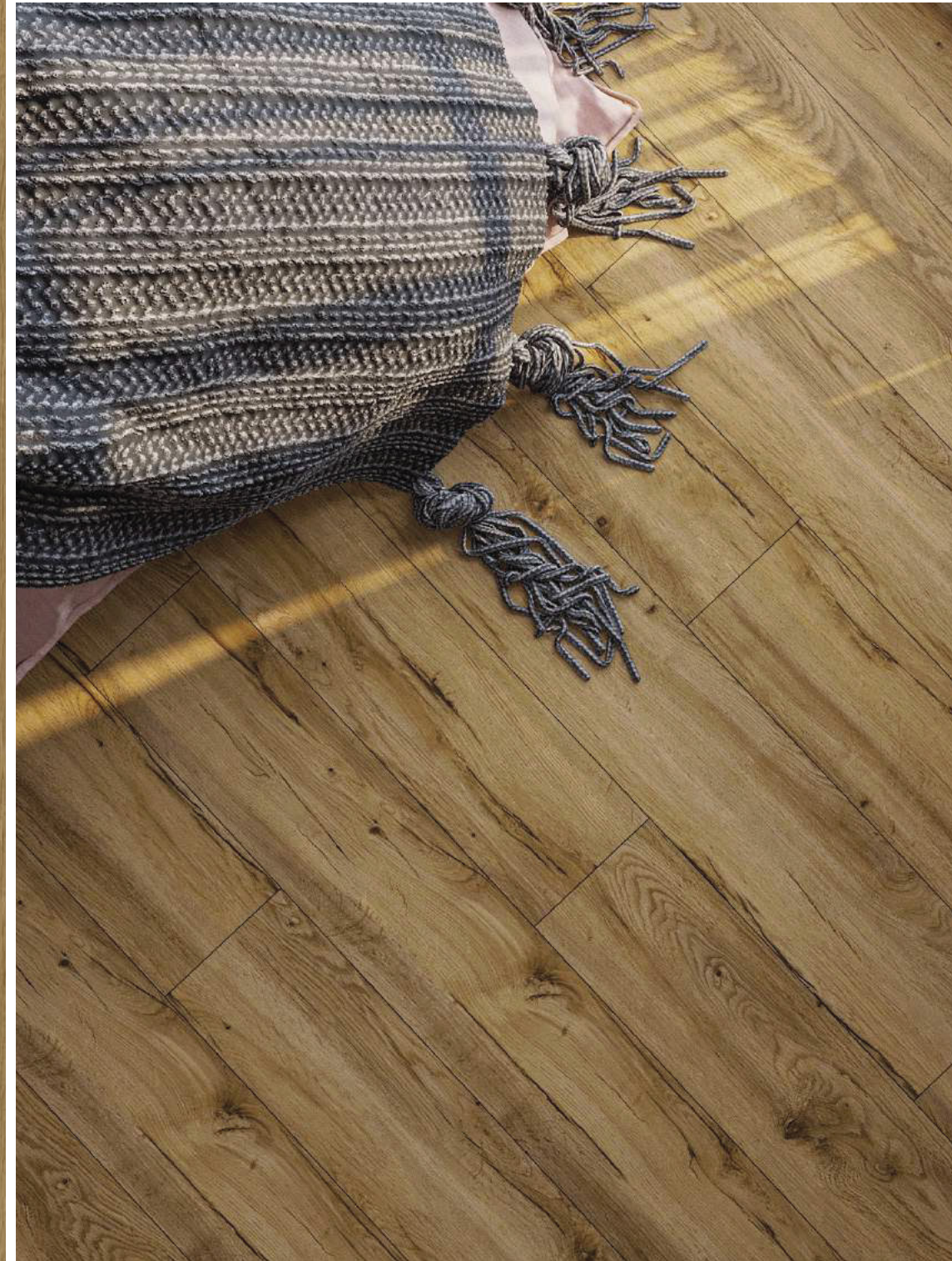
# SPC/LVT FLOORING COLORS



OAK SA377



OAK SA379





# SPC/LVT FLOORING COLORS



EIR SA515



EIR SA524



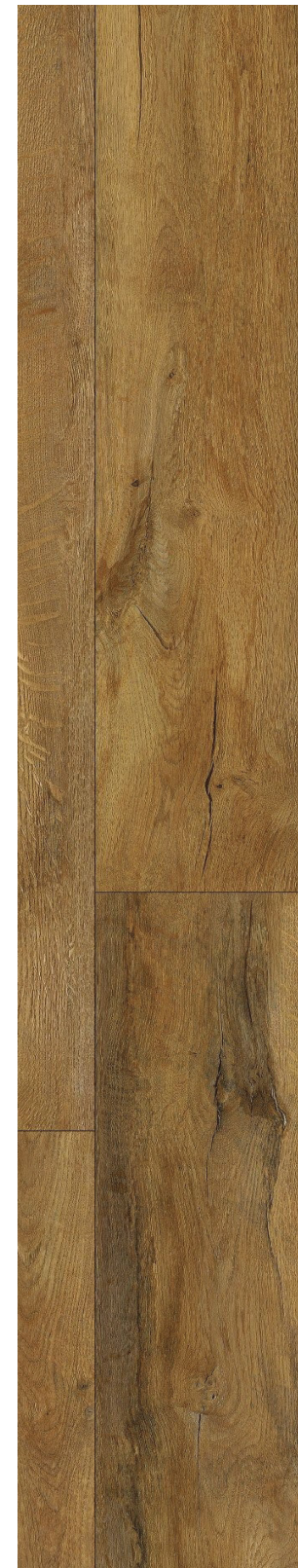


# SPC/LVT FLOORING COLORS



EIR

SA531



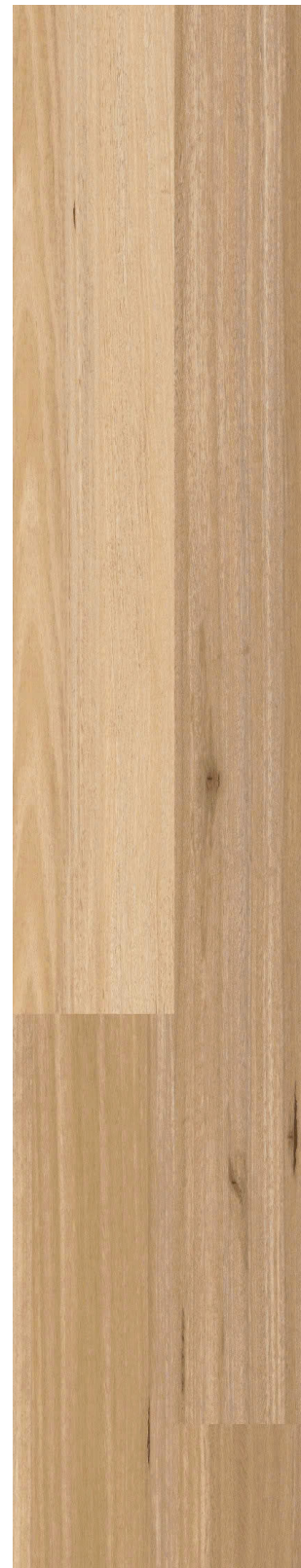
EIR

SA532





# SPC/LVT FLOORING COLORS



EIR SA541



EIR SA555





# SPC/LVT FLOORING COLORS



EIR SA580



WOOD SA579





# SPC/LVT FLOORING COLORS

WOOD SA591





QUALITY CONTROL EQUIPMENT



Taber Abrasion Tester



Profile Projector



Peel Adhesion Testers



Digital Lab Weighing Scale



Digital Caliper 0-2000mm



Castor Chair Test Apparatus



Feeler (Thickness) Gauges



Digital Caliper 0-300mm



Gloss meter



Digital Portable Thickness Gage



Programmable Temperature Humidity Test Chamber



Automatic Residual Depression Testing Machine



TECHNICAL DATA SHEET

Testing items	Standard	Requirements	Results
Thickness, product without underlayment	ISO 24337	± 0.13mm	Pass
Size, tolerance		Length: ± 1mm Width: ± 0.15mm	Pass
Dimensional stability (6h, 80°C)	ISO 23999	≤ 0.2% (305mm)	Pass
Curl (6h, 80°C)	ISO 23999	≤ 2mm	Pass
Peel strength	EN431	≥20N (25mm, Wealayer 0.3mm) ≥30N (25mm, Wealayer 0.5mm)	Pass
Color fastness	ASTM F1515	ΔE ≤ 8	Pass
Abrasion resistance	ASTM D6040	≥ 4500 cycles (Wearlayer 0.3mm) ≥ 6000 cycles (Wearlayer 0.5mm)	Pass
Opening between elements	ISO 24337	Average ≤ 0.1mm Individual value ≤ 0.2mm	Pass
Height difference		Average ≤ 0.1mm Individual value ≤ 0.15mm	Pass
Gloss	ISO 2813	4-8 Gu	Pass
Scratch resistance	ISO 1518	≥ 2000 grams	Pass
Residual indentation	ASTM F1914	≤ 3%	Pass
Static load	ASTM F970-17	Pass 720 psi at 0.007"	
Impact resistance	ASTM F1265-03a	No break or crack	Pass
Resistance to chemical	ASTM F925-13	No more than a slight change in the surface dulling, surface attack or staining	Pass
Impact insulation class (IIC)	ASTM E 492-09 ASTM E 989-18	N/a	69 db
Sound transmission class (STC)	ASTM E 90-09 ASTM E 413-16	N/a	68 db
Burning behaviour	EN 13501	BSf-1	
Slip resistance	EN 13893	Class DS	
Static Coefficient of friction	ASTM D2047-17	Dry: 0.42/ Wet: 0.61	
Thermal resistance	EN 12667	0.028 – 0.053 /Wm^2 K	
Formaldehyde emission	EN 717	Class E1	
Locking system		Uniclic	



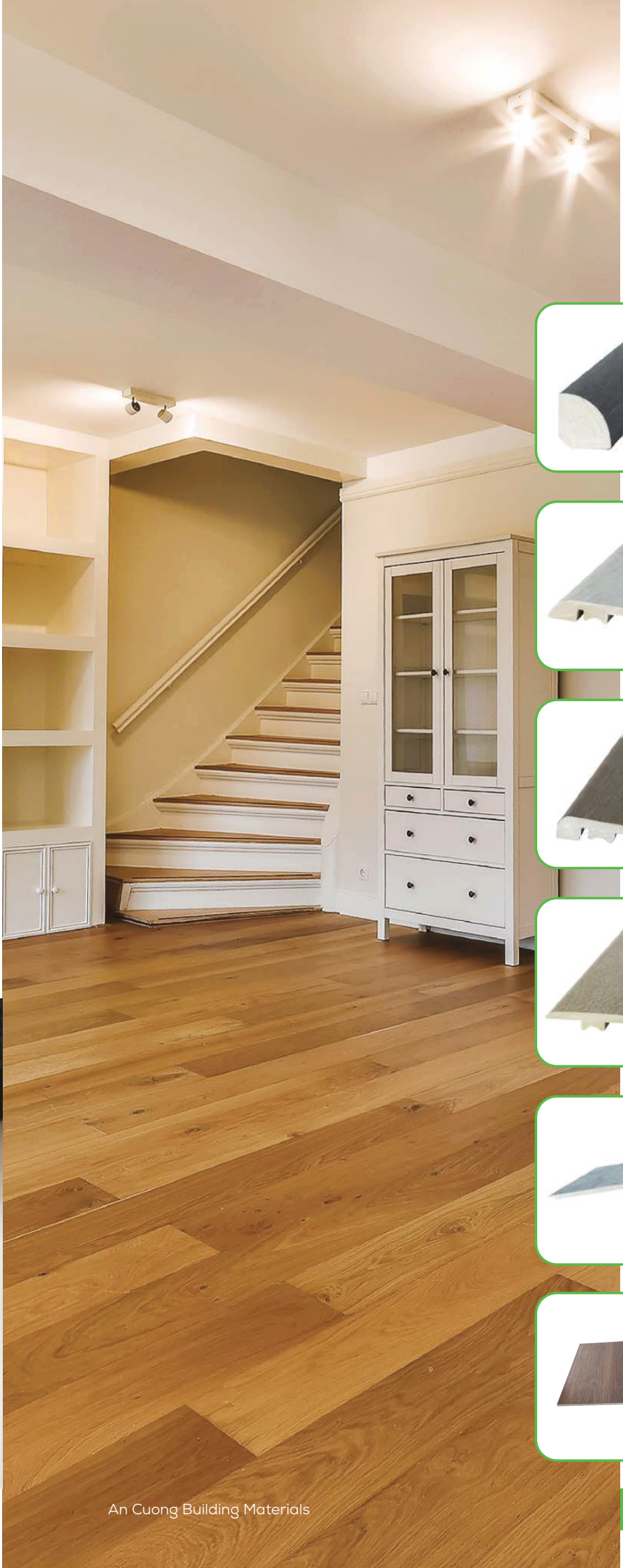
# CERTIFICATE



- Antibacterial
- Critical Radiant Flux ASTM E648
- Resistance To Light ASTM F1515
- Static Load ASTM F970-17
- Smoke Density ASTM E662
- Staining Resistance ASTM F925-13
- Heat Stability ASTM F1514-03-2013
- Impact Resistance ASTM F1265-03a
- Wear Layer Thickness ASTM F410-8(2017)
- Static Coefficient Of Friction ASTM D2047-17
- Impact Insulation Class ASTM E492-09 & ASTM E989-18
- Sound Transmission Class ASTM E90-09(2016) & ASTM E413-16



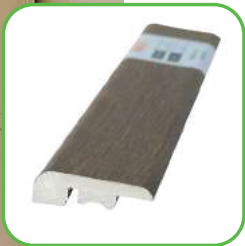
# ACCESSORIES



**Round Edge Skirting Molding**  
24\*16.10\*3000mm



**Reducer Molding**  
45\*10\*3000mm



**Ending Molding**  
35\*10.20\*3000mm



**T-Shaped Molding**  
45.10\*8.20\*3000mm



**Groove Stair Nosing**  
110\*14.50\*3000mm



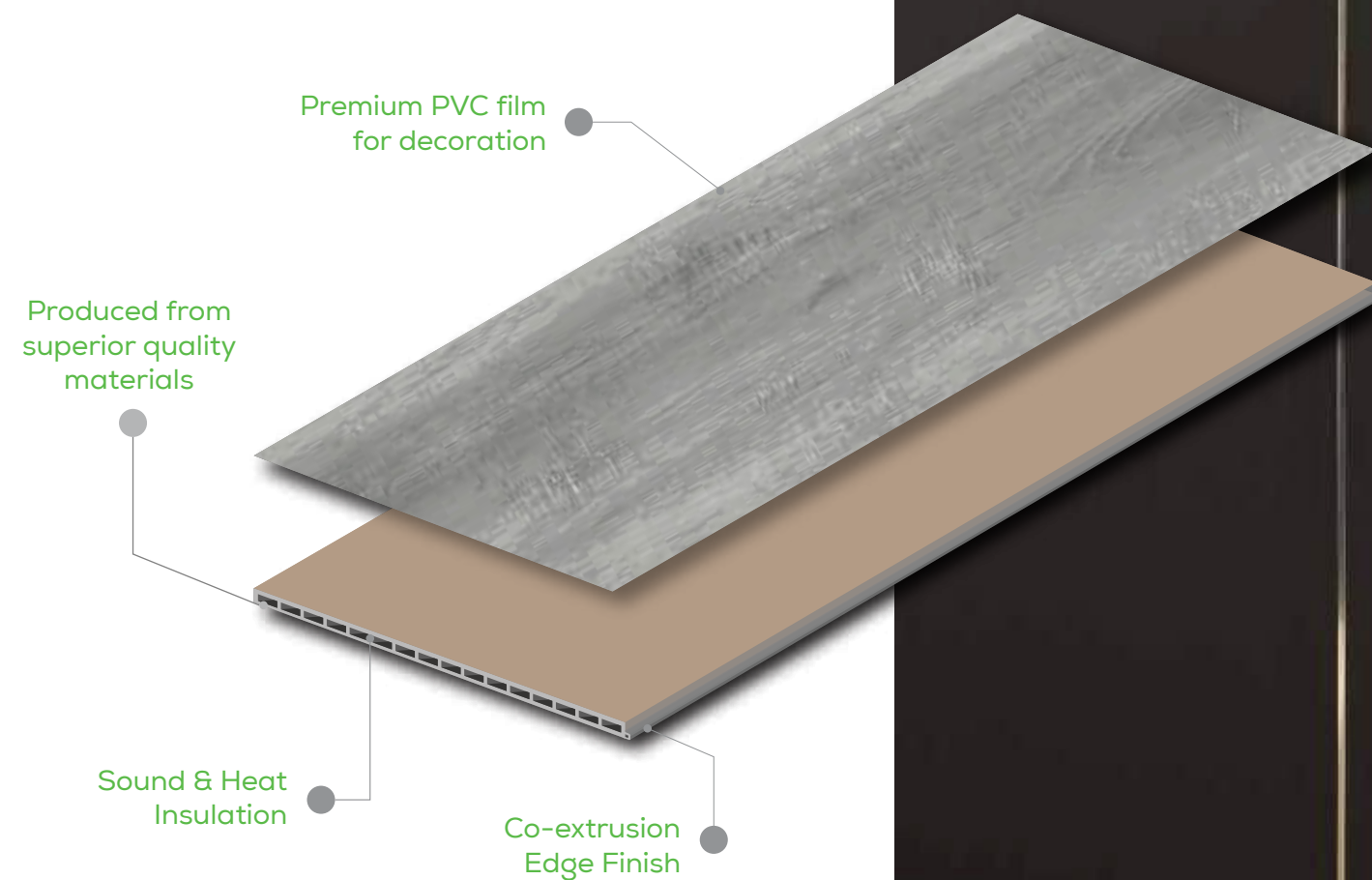
**Strair tread**  
1050\*310\*43\*8 mm



## PVC WALL AND CEILING PANELS

Our PVC Wall and Ceiling Panels are tough, high durability and low maintenance compared to tiles or natural woods. Our products are a perfect choice for wet areas in rooms such as kitchens and basements because it is water-proof and mildew resistant.

Dimension	Length: 2900mm (Customized)
	Width: 600mm; 400mm
Thickness	8.0mm
Surface	UV coating
Surface Style	Wood / Décor Paper / Stone



## FEATURES



WATERPROOF  
AND DAMP-PROOF



FIRE RETARDANT



INSECTS,  
TERMITES RESISTANT



HIGH DURABILITY  
SOUND ABSORBANCE



EASY TO CLEAN



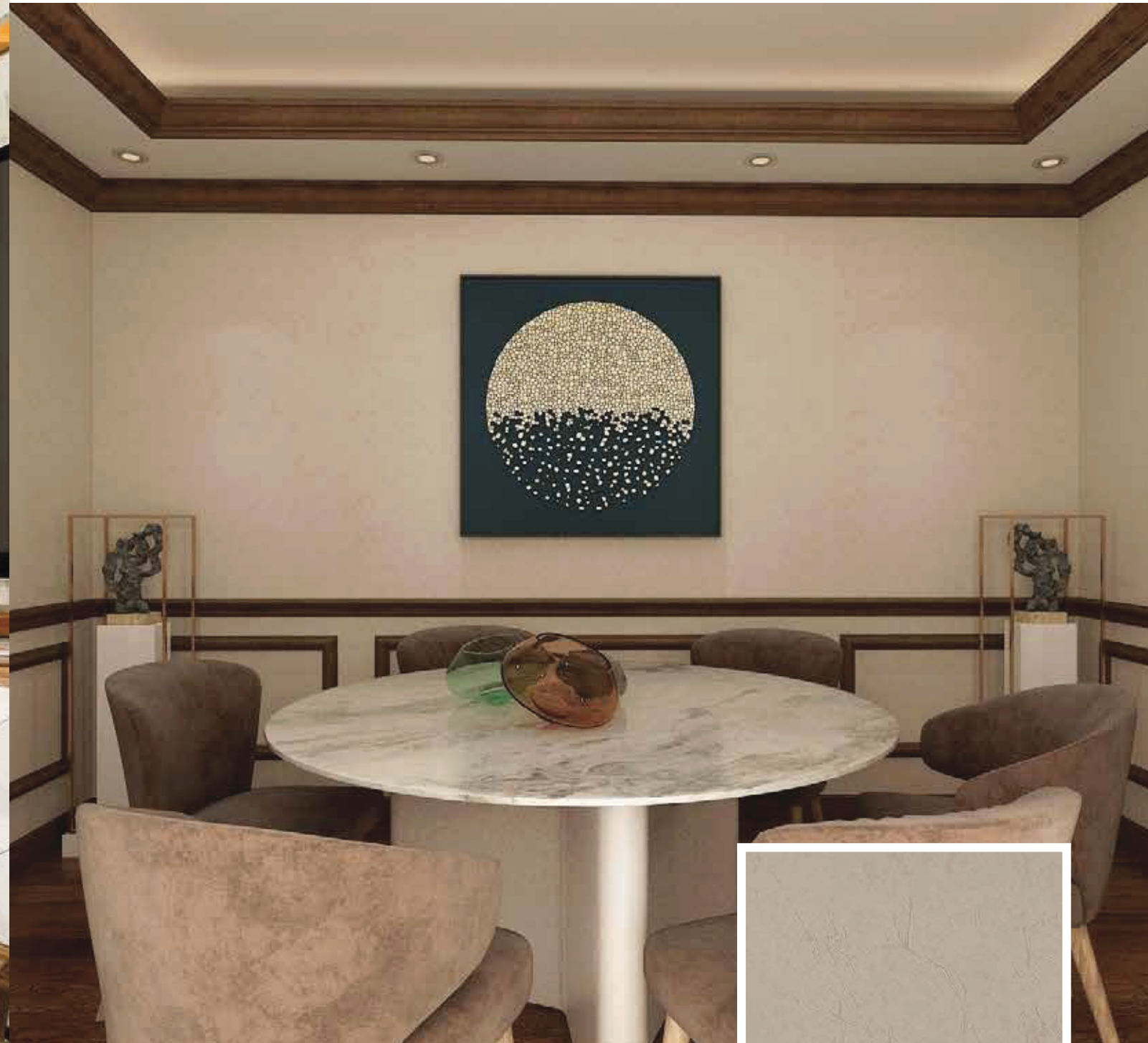


# COLORS

Here are some colors and inspiring ideas to help you design your dream space with PVC Wall Panels.



# CEILING PANELS



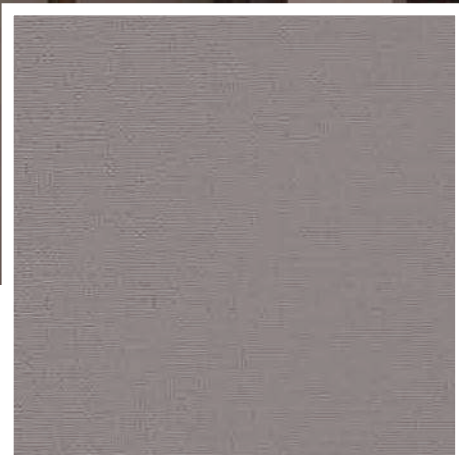
DECOR PAPER STYLE

01C



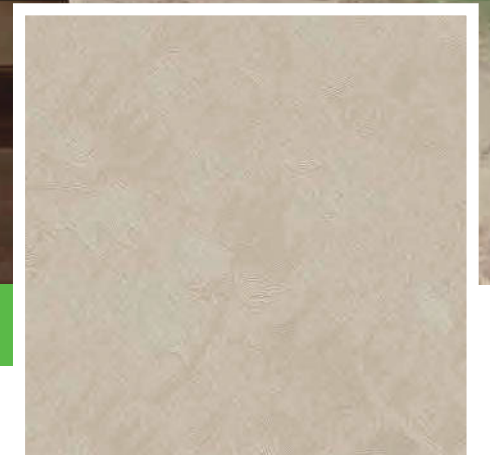
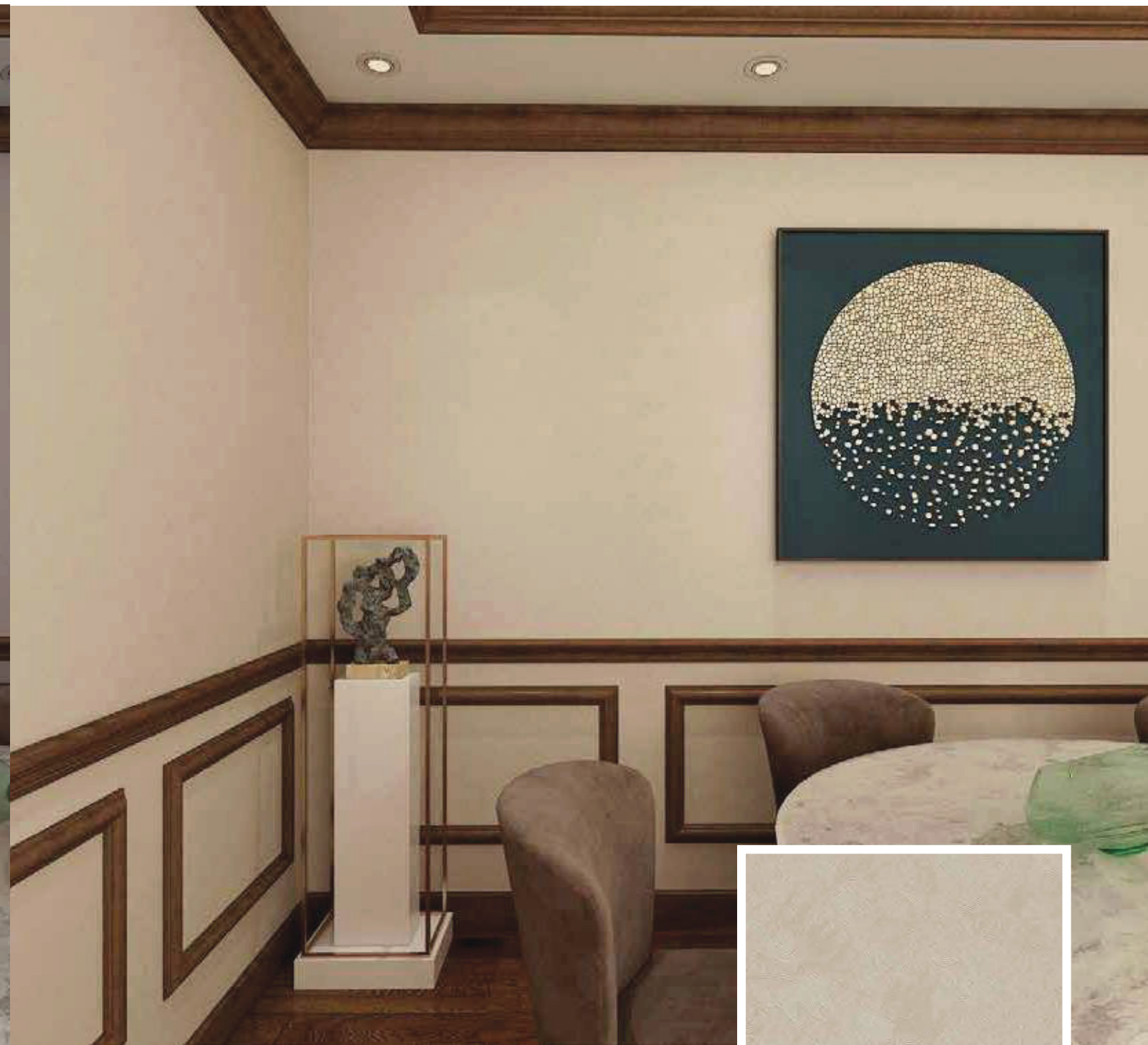


# PVC WALL AND CEILING PANELS



04A

DECOR PAPER STYLE

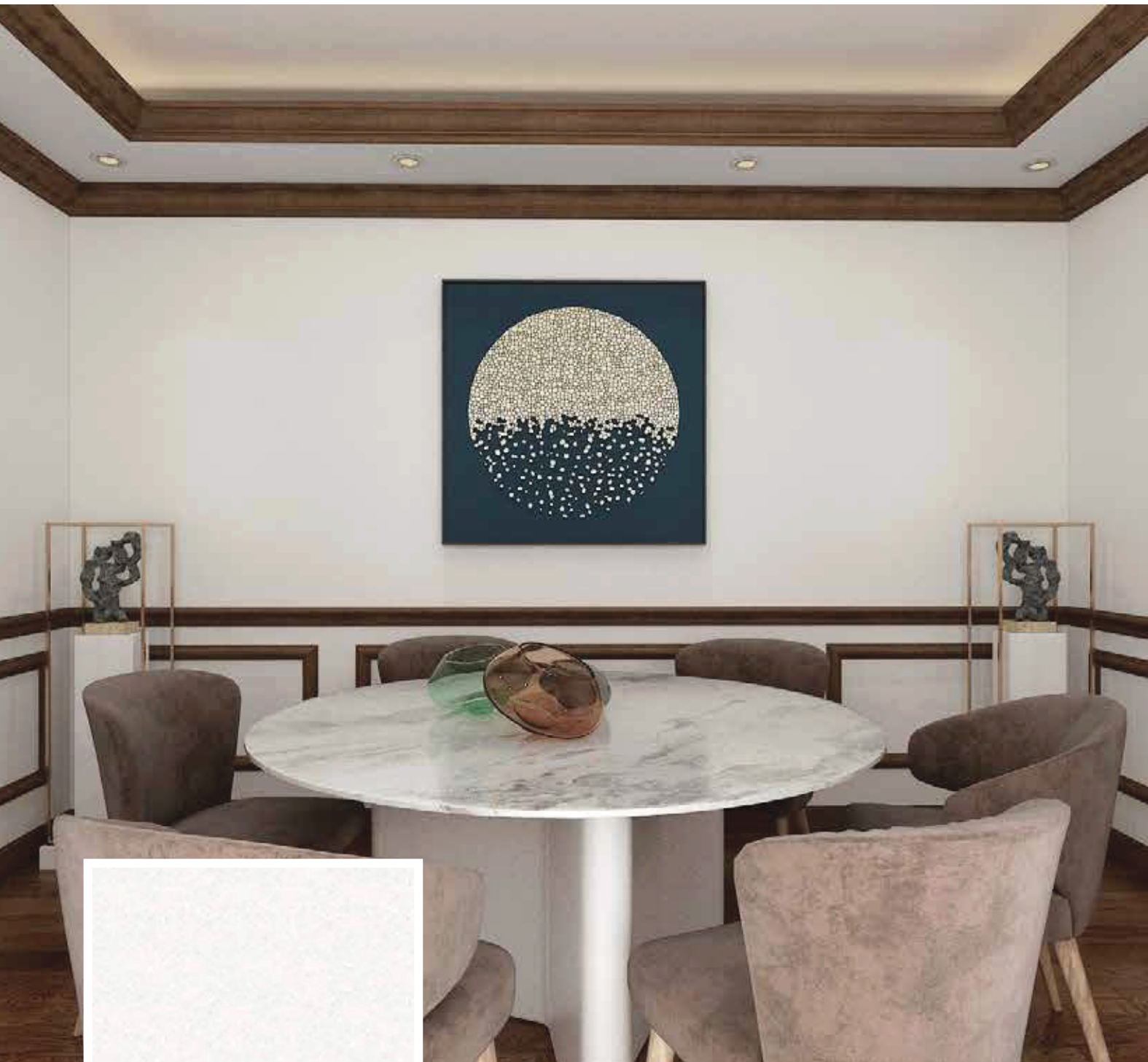


23A

DECOR PAPER STYLE



# PVC WALL AND CEILING PANELS



25A

DECOR PAPER STYLE



29A

DECOR PAPER STYLE



# PVC WALL AND CEILING PANELS



31A

DECOR PAPER STYLE



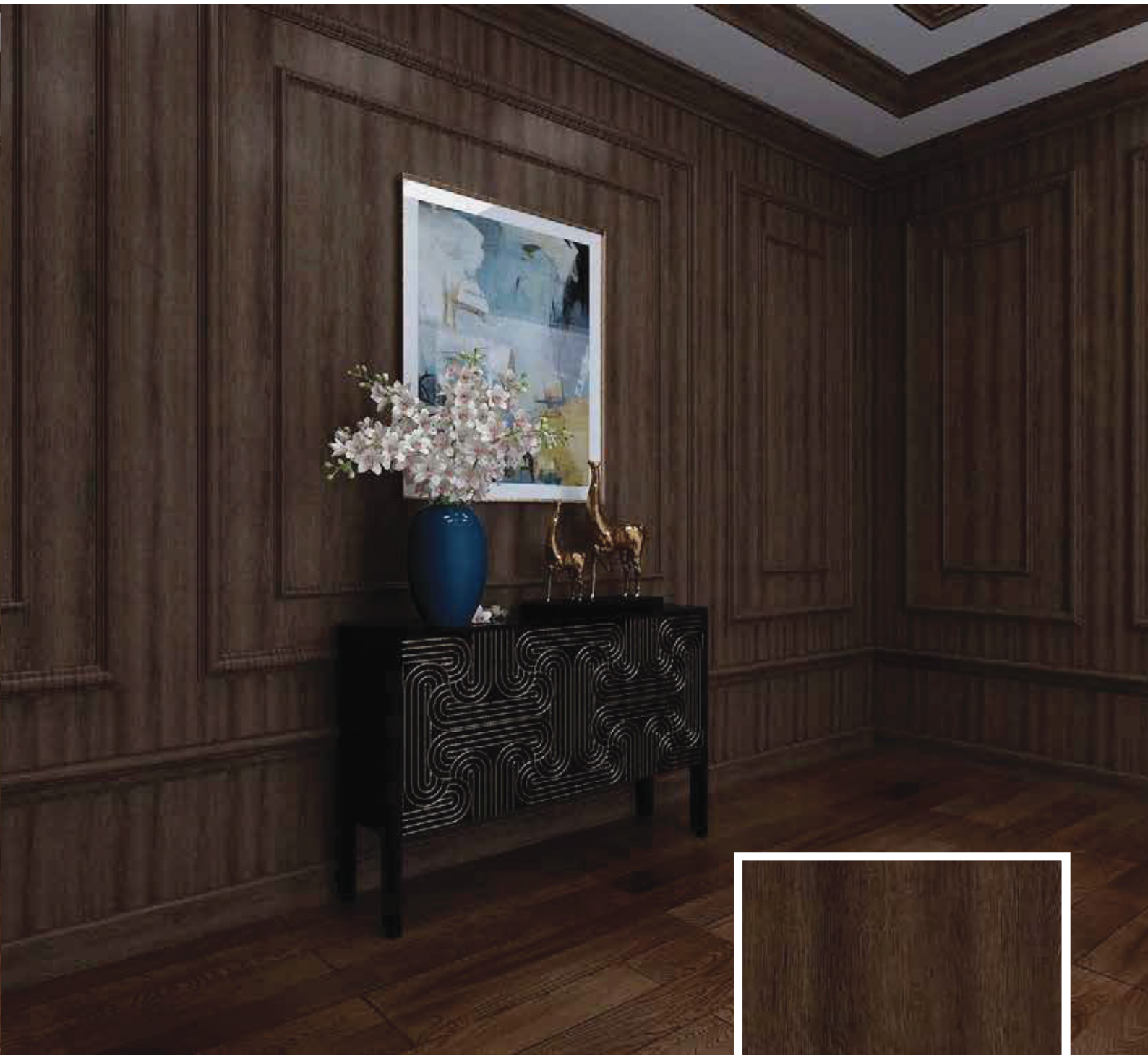


# PVC WALL AND CEILING PANELS



26A

WOOD STYLE

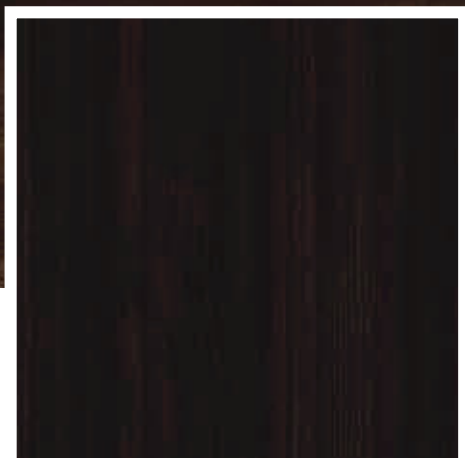
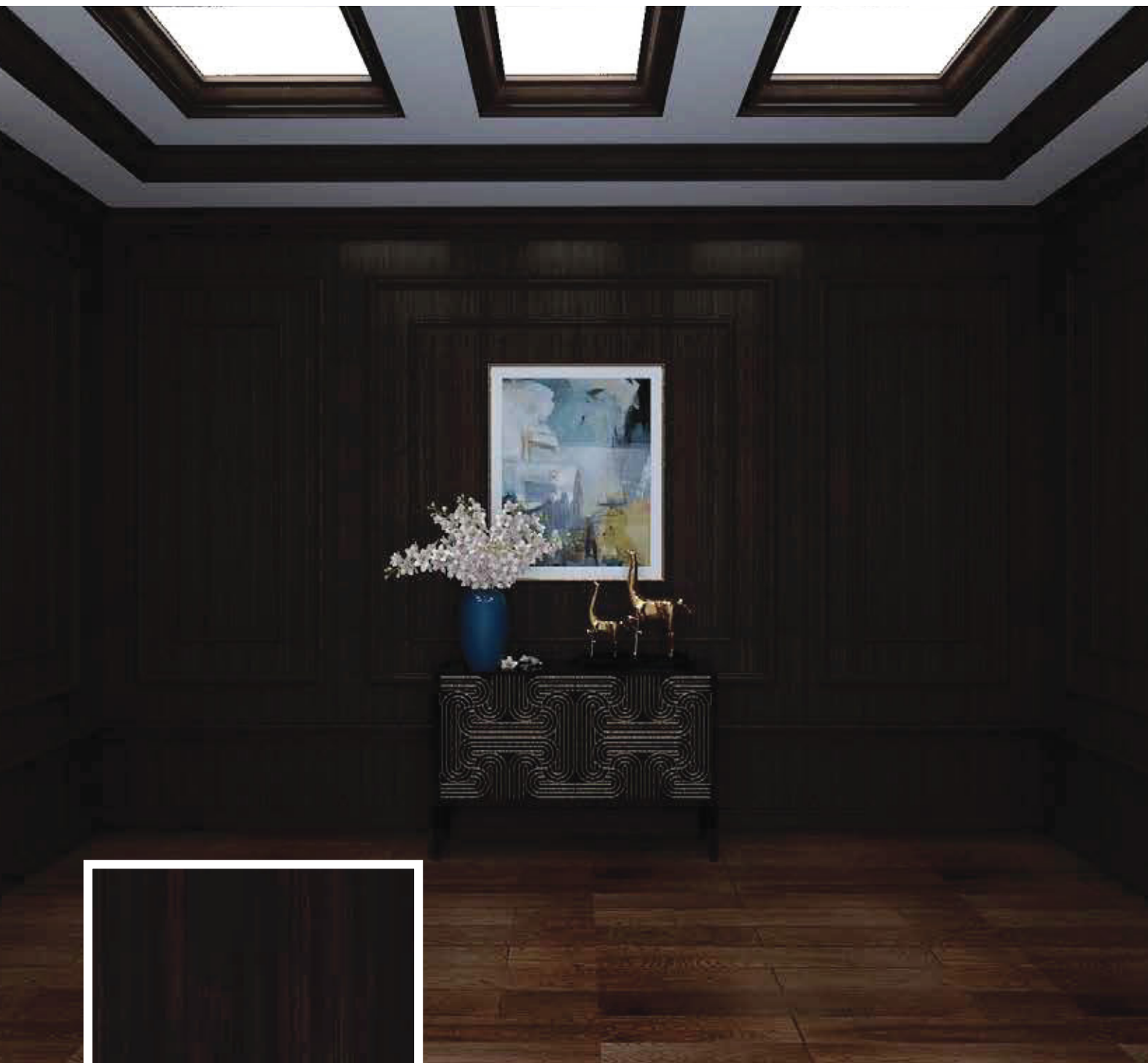


34A

WOOD STYLE

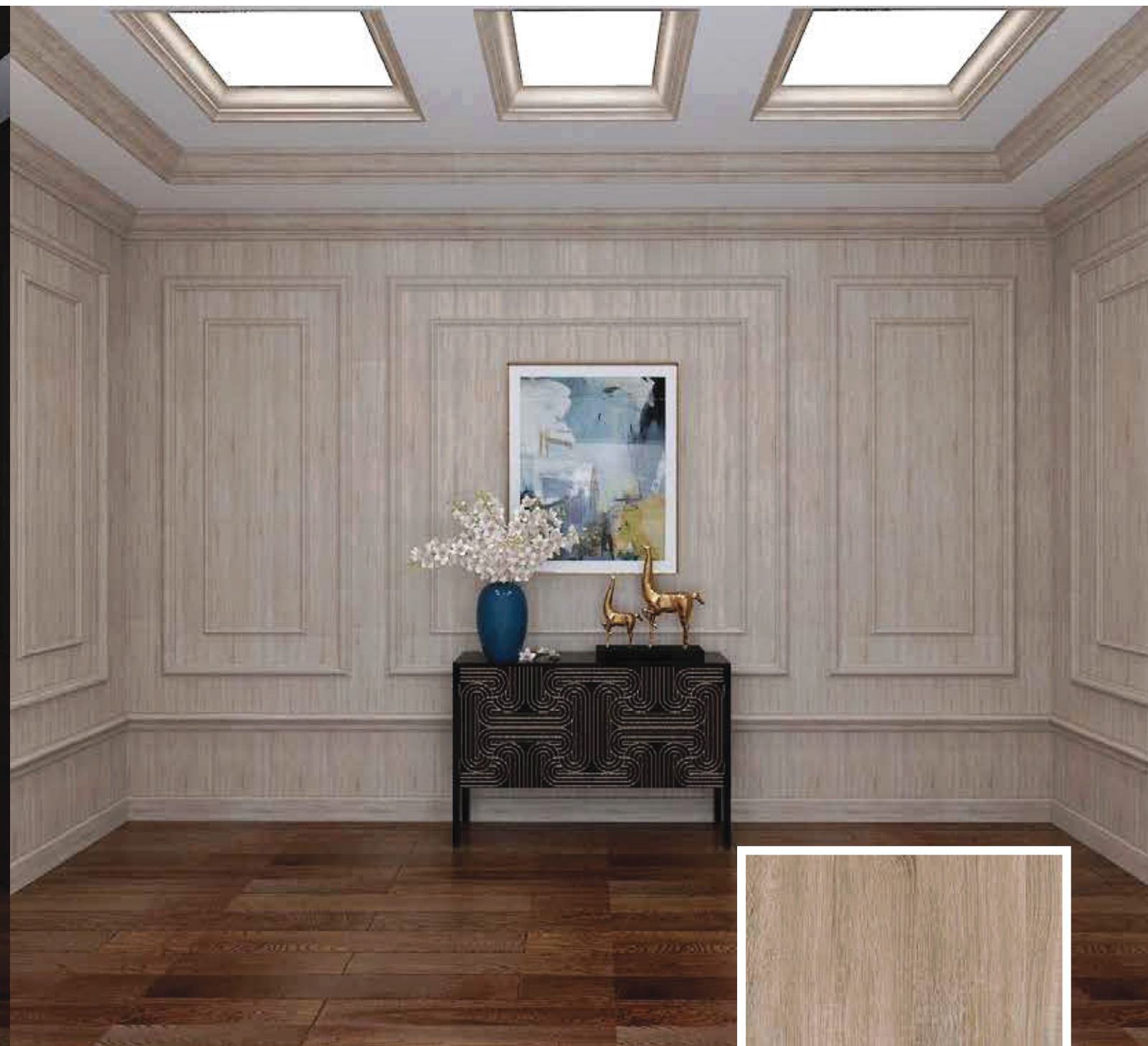


# PVC WALL AND CEILING PANELS



37A

WOOD STYLE

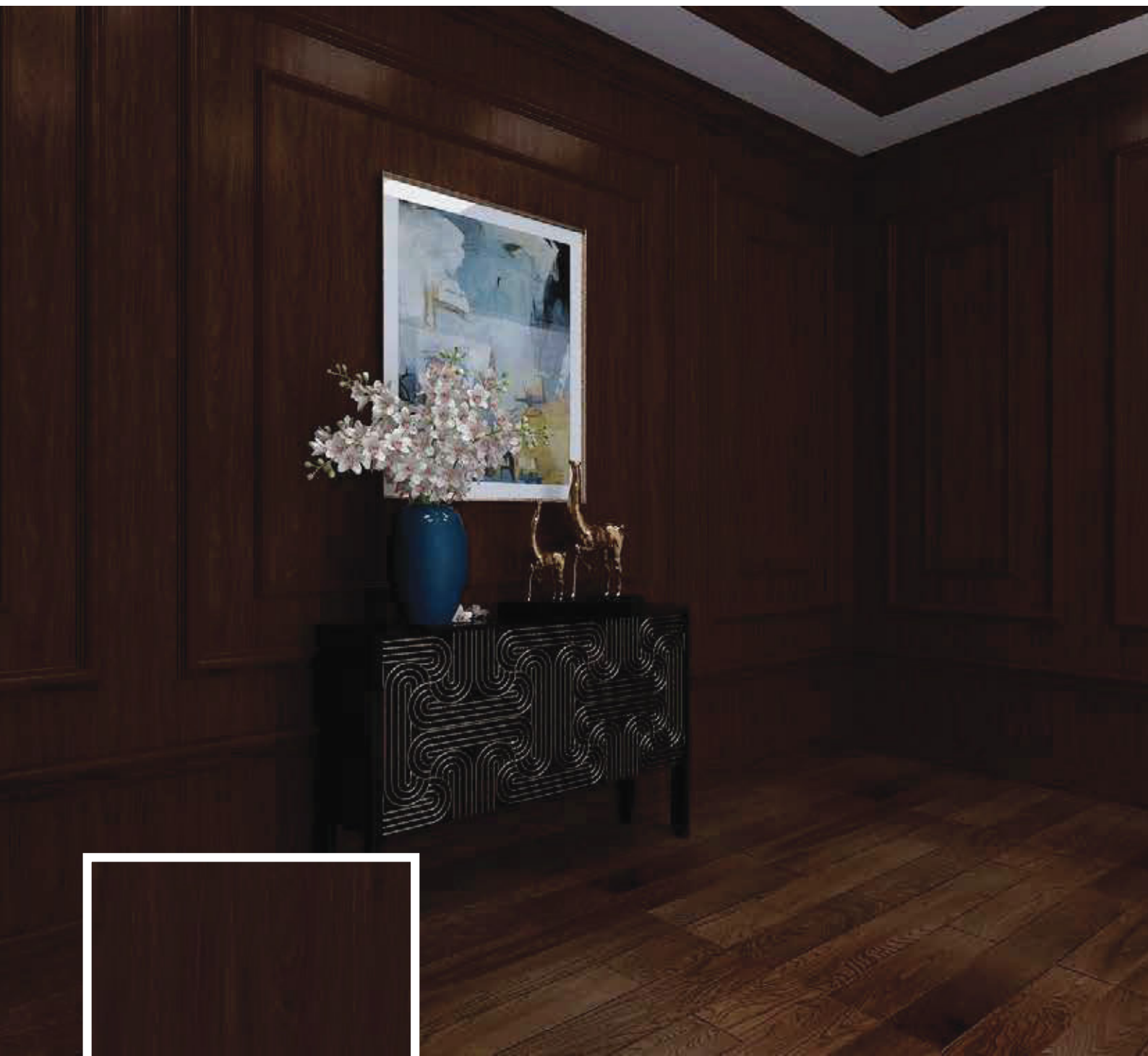


43A

WOOD STYLE

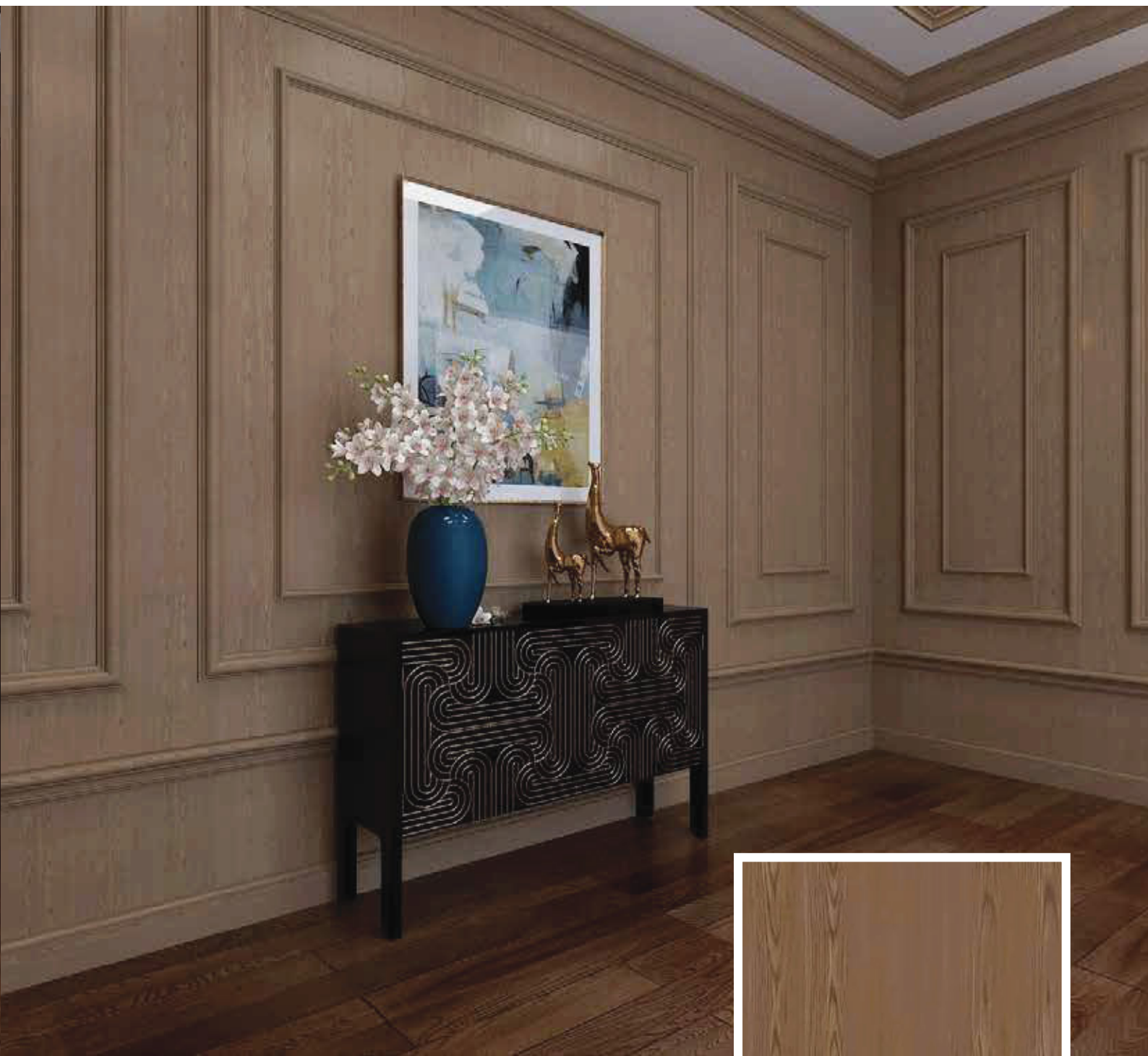


# PVC WALL AND CEILING PANELS



44A

WOOD STYLE



57A

WOOD STYLE

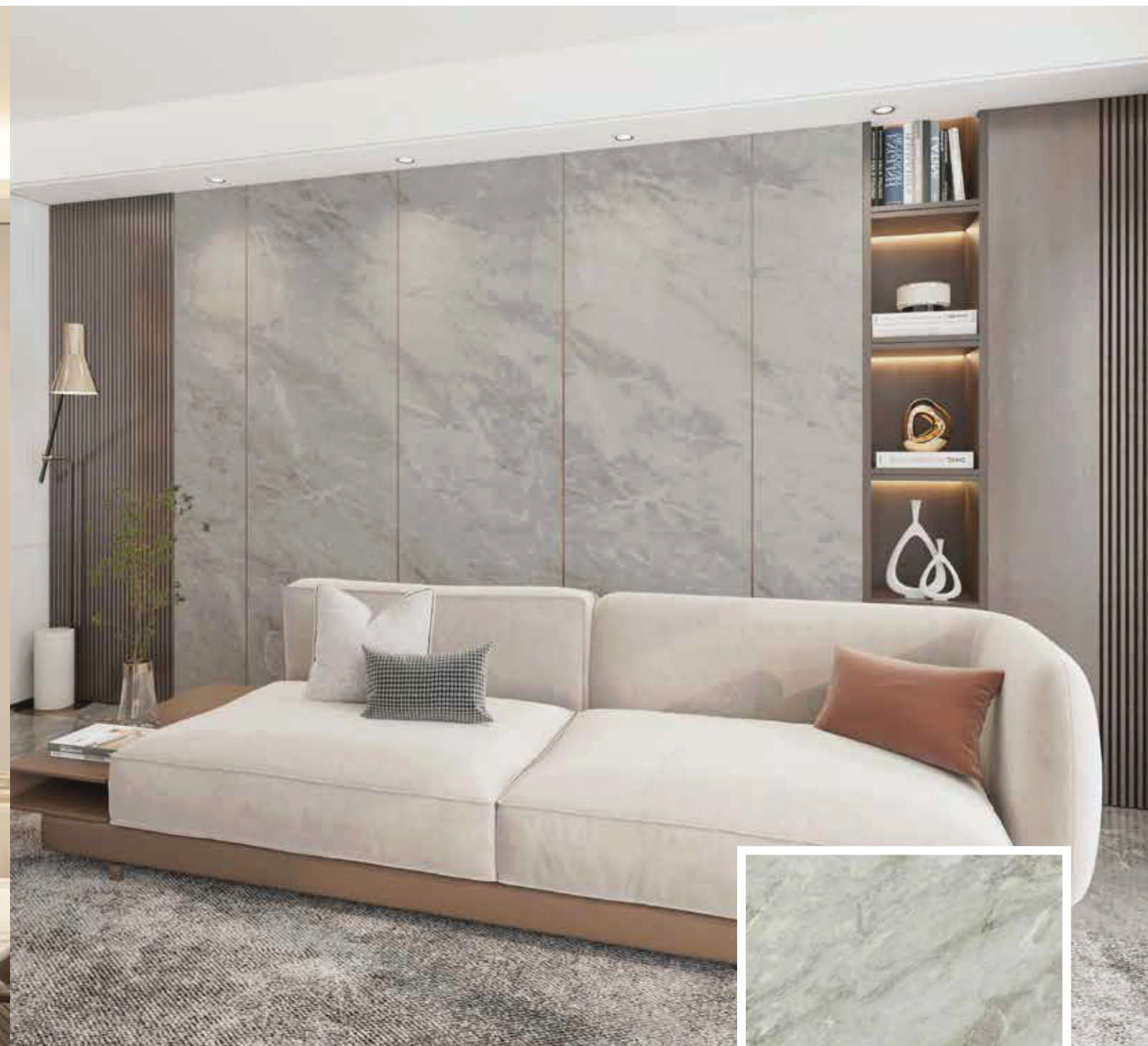


# PVC WALL AND CEILING PANELS



V62A

WOOD STYLE



V71A

STONE STYLE



A modern interior space featuring walls clad in vertical PVC wall cladding. The cladding has a wood-grain texture and is installed in a hallway or room with a white ceiling, track lighting, and a window with sheer curtains. A potted plant is visible in the foreground.



Types	mm
3 rib box	200x18x3000
5 high rib box	220×19.70×3000
5 rib box	150x10x3000

## ACCESSORIES

**Casing (positive angle)**  
30\*30\*3000mm

**Railing moulding 35**  
35\*18.5\*3000mm

**Casing (negative angle)**  
25\*10\*3000mm

**Railing moulding 60**  
60\*28\*3000mm

**Cornice molding 100**  
100\*26\*3000mm

**Skirting board 100**  
100\*15\*3000mm

**Chair railing 45**  
45\*20\*3000mm

**Chair railing 80**  
80\*29\*3000mm

**Square molding**  
60\*30\*3000mm

**Chair railing 90**  
90\*30\*3000mm

**Cornice molding 135**  
135\*33\*3000mm

**Skirting board 150**  
150\*20\*3000mm

**Chair railing 60**  
60\*23.5\*3000mm

**Door/window frame**  
48\*50\*3000mm

An Cuong Building Materials

91



Casing (positive angle)  
30\*30\*3000mm

Railing moulding 35  
35\*18.5\*3000mm



Casing (negative angle)  
25\*10\*3000mm



Railing moulding 60  
60\*28\*3000mm



Cornice molding 100  
100\*26\*3000mm



Skirting board 100  
100\*15\*3000mm



Chair railing 45  
45\*20\*3000mm



Chair railing 80  
80\*29\*3000mm



Square molding  
60\*30\*3000mm



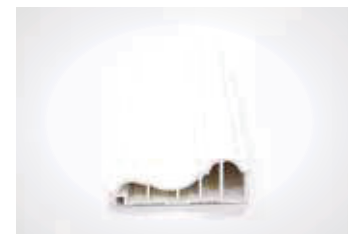
Chair railing 90  
90\*30\*3000mm



Cornice molding 135  
135\*33\*3000mm



Skirting board 150  
150\*20\*3000mm



Chair railing 60  
60\*23.5\*3000mm



Door/window frame  
48\*50\*3000mm